

just

ISSUE 119

BEVERLEY

IT'S YOUR MAGAZINE

FREE



THE COOLEST PANTO THIS CHRISTMAS
"THE SNOW QUEEN"

NEWS, WHAT'S ON, LIFESTYLE, FEATURES, PUZZLES, PHOTOS & MORE

Wishing you a very Merry Christmas and a Happy New Year from the Stipendia team!



L-R: Donna Walker, Darya Larina, Lynne Auton (Director), Emily Manley, Bianca Nastase.

**Improve business performance -
outsource your payroll**

Payroll Outsourcing Benefits

- ✓ Cost reduction
- ✓ Better staff productivity
- ✓ High accuracy & reliability
- ✓ e-payslips direct to employees via our app
- ✓ A named personal contact
- ✓ Added value services including HR & Benefits in Kind
- ✓ Useful online information

to arrange a **FREE** meeting
call us on: 0845 308 2288
or visit
www.stipendia.org.uk

6/7 THE COOLEST PANTO - THE SNOW QUEEN



4 DRIVEN TO SUCCEED



5 AIM HIGHER BEVERLEY



11 BISHOP BURTON COLLEGE



20 LIGHTS SWITCH ON



21 WHITE RIBBON AWARDS



32 BEVERLEY AC



Contributors:

Julian Minshall, Olivia Peace, Rich Manville, Mandy Aitken, Malcolm Anderson, Lynne Auton, Louise Barrett, Jo Bridgeman, Andrew Cooper, Shane Cooper, Julie Dowding, Fran Dunning, ert, Cecilia Hall, Josh Harrison, Amanda McConnell, Navigation Wealth Management, Lewis Northen, Colin Raynor, Ian Richardson, Nathan Wilson.

REMEMBER! If you see examples of anti-social behaviour or other types of low-level crime, do report it to the appropriate authorities. **POLICE - Emergency 999, Non-urgent 101.**
ANTI-SOCIAL BEHAVIOUR (East Riding of Yorkshire Council) - 01482 393939.
 The magazine is available from outlets in Beverley and surrounding areas.

Disclaimer - All the information provided was correct at the time of going to print.
 ISSN 2754-9216



Please pass your Just Beverley on or recycle it responsibly.
 Printed by: Jadan Press.

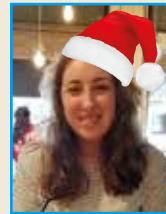
DECEMBER LETTER FROM THE EDITORS



Merry Christmas everyone. We are lucky in Beverley to have such a variety of entertainment on offer during the festive season. Something for everyone.

If you have a chance, take time for reflection - words hold immense power; they can inspire, heal, and uplift, hurt and divide. A kind word can brighten someone's day. Understanding the impact of our words can change the day for everyone. Make this Christmas a Happy one.

Have a Merry Christmas and a safe and healthy New Year.
Julian.



Happy December and a Merry Christmas to you all.

I am looking forward to indulging in all my favourite Christmas films, enjoying time with family and friends, and having some me time as well.

With lots of chocolate of course.

During Christmas and into 2025 I look forward to catching up with friends, sharing traditions, laughter and lots of fun.

Whatever you do this Christmas, have a great time.

Stay safe.
Olivia.



GET IN TOUCH WITH US:

Website: justbeverley.co.uk
Email: info@justbeverley.co.uk
Telephone: 01482 679947
Facebook: facebook.com/justbeverley

If you would like copies for your business to distribute to staff and customers, call Just Beverley on **01482 679947.**

JODI - DRIVEN TO SUCCEED

Jodi said, "20 years ago I started a degree at Bishop Burton College and completed two years of the course. The desire to pursue a career meant I didn't do the final year and went to work in the equine industry."

Jodi commented further, "My parents have always been very supportive and encouraged me in whatever direction I have taken. Years later, when an opportunistic conversation with someone at the college resulted in a late application to chase my dream with horses, my parents were right behind me. This led to a swift acceptance on to the final year of the BSc Equine Sports Science and Coaching degree, joining a cohort of much younger students in September 2023. It was time to fulfil my dreams!"



Jodi committed herself with the support of her family to fulfilling her dream, balancing a demanding academic schedule

with the responsibilities of caring for two horses, two dogs, and husband while also working full-time at Dream Doors designing kitchens, was no easy feat.

Jodi soon realised that a significant aspect of her academic journey was the completion of her research dissertation. Jodi commented, "This was a seriously demanding intellectual challenge for someone who has been out of academia for so long and required countless hours of research, analysis, and writing. Despite the immense workload, I was committed and determined to succeed."



Through hardwork and determination, Jodi was immensely proud to be able to attend her graduation on Friday 1st November at the beautiful Beverley Minster. Jodi said, "This was the pinnacle of my equine career so far. A testament to the power of perseverance and the pursuit of my dreams. None would have been possible without the particular support of my husband Jack, best friend Claire, and my parents in law Terri and Andy Wilkinson - (owners of Dream Doors in Beverley), who attended the ceremony with me".

Jodi went on to say, "I hope my story inspires people young and older, like me, all to strive for excellence, no matter the challenges we may face, and to take the chance, you never know where it may take you!"

Jodi Wilkinson, BSc (Hons)

EAST YORKSHIRE GUIDING CELEBRATES THE LAUNCH AND SUCCESS OF THEIR WHITE RIBBON CAMPAIGN BADGE

Following the huge success of the Scouts White Ribbon Badge, launched during Jacky Bowes year as High Sheriff, the East Yorkshire Guiding have launched a similar badge and over the last few months many Rainbows, Brownies, Guides and Rangers have been completing the challenges to earn their badge.

White Ribbon UK aims to tackle violence and abuse against women and girls. The badge has been developed to help guides of all ages to learn how to be kind to each other, find support and talk about things that may be worrying them.



On Saturday 23rd November, Cottingham High School hosted the White Ribbon Celebration Event to celebrate completion of the challenges, present badges and raise awareness of the White Ribbon Campaign. This date of the event had been chosen to coincide with the start of the 2024 White Ribbon National 16 days of action.

Presentations were made by HM Lord-Lieutenant Mr Jim Dick OBE CSTJ and the Chief Constable of Humberside Police Judi Heaton.

In attendance His Worship the Lord Mayor of Hull and The Mayoress, The Chairman of the East

Riding of Yorkshire Council and Consort, Several Local Mayors and Councillors from across the ER, The Police and Crime Commissioner, Humberside Police and Fire and Rescue Officers and several other dignitaries including a Trustee from White Ribbon UK.

Jacky Bowes commented, "I am really passionate about driving awareness of the WR Campaign and all that it stands for, I am especially pleased how the GG Badge and the Humberside Scout Badge, which was the first WR to be launched, will make such a huge difference".

Jacky went on to thank HM Lord Lieutenant Jim Dick and The Chief Constable of HP Judi Heaton for making the presentations, also the Humberside Police Chief Inspectors Mark Lovel and Anne Marie McLoughin, in particular PS Phil Creasey for preparing the WR Badge Safeguarding Guidance Document.

Jacky said, "It is great to see both the Police and Fire and Rescue Services White Ribbon vehicles at the event. Also thank you to Rachel Macadam and Gary McCune of Humberside Scouts for their help in my year as High Sheriff for making the WR badge a reality.

"Congratulations and well done to all the amazing young people who are participating in the White Ribbon Challenge and to the leaders, parents and guardians who have supported everyone along the way."



MAYOR OF BEVERLEY'S CHRISTMAS MESSAGE 2024

As the year draws to a close and Christmas is upon us, once again our thoughts are of friends and family, parties and presents, mistletoe and merriment. It is a time when we gather with loved ones to share in festivities, laughter and boardgames! But, as Winston Churchill said, "Christmas is a season not only of rejoicing but of reflection".

When I think back at the past months since becoming Mayor of Beverley in May, I have had the honour of meeting so many wonderful, caring and hard-working people. They don't just do what is best for the community at Christmas time - they do this all year round.

Whether it is raising funds for other charities, organising activities for young people, helping those in need, or bringing sporting and cultural events to the people of our town, Beverley's community spirit is thriving.

It has been a privilege to work closely with one local charity in particular - Cherry Tree Community Association, which is my Mayoral Charity. It performs a huge social function, providing free advice on a wide range of issues, from benefits advice and debt support, to employment issues and consumer matters.

It also runs an amazing pre-school, arranges activities for older residents and manages a vital community pantry, which supports those who are most in need. Their current big project is to raise funds for a purpose-built Youth Hub in Beverley, which will host their incredibly popular youth club.

As many of us prepare for Christmas by buying



and wrapping presents, stuffing the turkey and pouring the wine, I would also urge you, if you can, to support the work of Cherry Tree.

You might be able to make a donation, create a New Year resolution to volunteer with the organisation or support them in any other way you can - more details can be found here: www.ctca.org.uk/support-us/

I am proud to represent Beverley. We have some amazing historic buildings and wonderful natural areas, but what really makes this town special is its people. As Mayor, and on behalf of Beverley Town Council, I would like to wish you all a Merry Christmas and a peaceful and Happy New Year.

Councillor David Boynton, Mayor of Beverley.

BEVERLEY PHOTOGRAPHIC CLUB - DECEMBER PROGRAM

Please note we are the Beverley Photography Club. Not the Beverley Photographic Society.

Tuesday 3rd December - A Zoom presentation by Harry Kingman titled, "Bhutan - Land of the Thunder Dragon."

Tuesday 10th December - 7pm at the Rose and Crown. Club selection for the inter-club Norman competition.

Tuesday 17th December - 7pm at the Rose and Crown. Christmas fun evening, cheese and biscuits, quiz. Lots of laughs. All events are subject to change. Please check.

Happy Christmas and New Year.

The aim of the club is to share knowledge and experience amongst all members in a friendly atmosphere. We encourage our member's interests in all aspects of photography by means of various events and exhibitions. If you are interested in joining the club, please come along and meet the members. No commitments. We are members of the Yorkshire Coastal Photographic Group, the Yorkshire Photographic Union and affiliated to the Photographic Alliance of Great Britain.

<https://ypu.org.uk/>

More information and contact details can be found on the following sites.

<https://beverleyphotographic.wixsite.com/club>

<https://www.facebook.com/groups/beverleyphotographyclub>

<https://www.flickr.com/groups/1095249@N24/>

AIM HIGHER BEVERLEY

Founded by two experienced parents, Nicola Robinson and Gill Jagger, Aim Higher provides support for youngsters with neurodiversity, mental health, and educational needs.



The pair have used their lived experiences to develop social groups and outings adapted to the social and sensory needs of young people on the spectrum. The charity also runs free informal and friendly monthly support for parents and caregivers at Beverley's Armstrong's Café. The meetings are pressure free and help connect families facing

difficulties caused by autism and neurodiverse conditions both in education, work, and at home.

The charity said, "We're here for children and young people aged 0-25, as well as their families every step of the way. Whether it's providing resources, guidance, or emotional support, we believe in uplifting the whole family as they navigate their journey together."

The group meets on Flemingate on the third Wednesday of the month. Organisers encourage people to pop in and chat at any of their events. More information is available on their website www.aimhighercharity.com and Facebook page: www.facebook.com/Aimhigherhullandeastyorkshire
Article by Michelle Horst.

PREPARE FOR CHANGES

Summary of some of the Budget Changes:

1) No changes to personal allowances or tax bands until at least April 2028.

2) National minimum wage rates to increase for all from April 2025. For those 21 and over an increase from £11.44 per hour to £12.21 per hour.

3) Increase in Employers national insurance (NIC) rates from April 2025 from 12.8% to 15% and a reduction in the level at which employers start paying NICs for each employee.

4) Increase in Employers Allowance from April 2025 from £5,000 to £10,500pa.

5) Stamp duty land tax rates to increase and thresholds to decrease on main and second properties from April 2025.

6) Changes to Inheritance Tax rules on pensions from April 2027.

7) Changes to Business Property and Agricultural Reliefs from April 2026.

If you would like further information on the above and a free no obligation consultation, please contact Lynne Auton at Finnies and Stipendia on **01482 861919**.



STAY COOL - IT'S

As the temperature starts to cool and we look forward to the Winter's snow and all the magical experiences that go with it, this year we can enjoy the Coolest Panto in Town - "The Snow Queen" at Parkway Cinema and Theatre, welcoming Talegate Theatre Productions to Beverley to bring you your festive Panto cheer.



It is tradition that at Christmas we watch and embrace Panto - this year a family favourite, "The Snow Queen", where love overcomes evil, a Panto everyone can get involved with offering a unique blend of entertainment that captivates audiences of all ages.

When you enter Parkway Cinema and Theatre you walk into a magical Christmas experience. Artistic Director, James Worthington commented, "We enjoy coming back to the Parkway, audiences really get involved and that makes it extra special for everyone."

Families can expect to see a lively performance encouraging audience participation, inviting everyone to cheer for the heroes and boo the villains, of course a tradition for Panto season.

What is the Snow Queen about?

Our pantomime version takes elements from the original story from Hans Christian Andersen, parts of the popular animation version and mixes it all up with panto magic. It all revolves around the love of two sisters, the summer fairy and the Snow Queen. Jack Frost has convinced the Snow Queen to rule over Bevonia causing Winter to last forever. Join us as her sister, the Summer Fairy, breaks the ice and saves the day along with our fabulous panto dame, Nancy Neapolitan and her silly Reindeer friend, Rudi.

How does Jack Frost convince the Snow Queen to turn mean?

He turns her heart ice cold by persuading the Snow Queen that her sisters do not love or need her. He wants it to remain Winter forever.

How is Summer Fairy helped on her journey?

With all good pantomimes, our hero is helped by our wonderful pantomime Dame, Nancy Neapolitan. Played by the self titled (minor) celebrity of Yorkshire, Dame James!

Where did the inspiration for the Snow Queen come from?

Hans Christian Andersen's story is based on a Swedish opera singer Jenny Lind, after he was romantically rejected by her. His characters helps teach children about the importance of friendship and the importance of making the right decisions and to discover the true essence of love and life.

The Snow Queen with elaborate costumes, colorful sets, and talented performers present a wonderful opportunity to introduce children to live theatre, sparking their imaginations and love for storytelling, combined with laughter and fun, creating lasting memories that families cherish for years to come.

Secure your ticket for the coolest show in town: **Parkway Beverley, 14th - 30th December 2024. Box Office: 01482 968090. parkwaycinemas.co.uk**



TIME FOR PANTO



COMPETITION WINNERS

Our congratulations go to **the Houghton Family** who won the competition for the Family Panto Tickets to watch *The Snow Queen*.



PERFORMANCE TIMES

- Saturday 14th December - 12pm & 4pm
- Sunday 15th December - 12pm & 4pm
- Saturday 21st December - 12pm & 4pm
- Sunday 22nd December - 12pm & 4pm
- Monday 23rd December - 12pm & 4pm
- Tuesday 24th December - 10am, 1pm & 4pm
- Thursday 26th December - 12pm
- Friday 27th December - 12pm
- Saturday 28th December - 12pm
- Sunday 29th December - 12pm
- Monday 30th December - 12pm



EVERY THURSDAY

(Doors open 9.30am)

Join us for a free brew and enjoy some great films on Beverley Parkway's Big Screen. Only £5 (or £6 for newer releases) with drink and biscuits included. Aimed at 55s & over. Films subject to change.

Thursday 5th December -

Paddington In Peru (£6)

Starring: Hugh Bonneville, Emily Mortimer, Julie Walters, Jim Broadbent.

Red One (£6)

Starring: Dwayne Johnson, Chris Evans, Lucy Liu, J. K. Simmons.

Gladiator 2 (£6)

Starring: Paul Mescal, Pedro Pascal, Joseph Quinn, Fred Hechinger, Lior Raz.

Thursday 12th December -

Red One (£6)

Starring: Dwayne Johnson, Chris Evans, Lucy Liu, J. K. Simmons.

Gladiator 2 (£6)

Starring: Paul Mescal, Pedro Pascal, Joseph Quinn, Fred Hechinger, Lior Raz.

Starring: Christopher Reeve, Bill Clinton.

Conclave (£6)

Starring: Ralph Fiennes, Stanley Tucci, John Lithgow, Sergio Castellitto.

Thursday 19th December -

Wicked (£6)

Starring: Cynthia Erivo, Ariana Grande, Jonathan Bailey, Ethan Slater.

Conclave (£6)

Starring: Ralph Fiennes, Stanley Tucci, John Lithgow, Sergio Castellitto.

CHRISTMAS FILM to be voted on by customers

Thursday 26th December -

No Senior Screen.



These are the films scheduled to open in December - all are subject to change. Check out up-to-date cinema listings at www.justbeverley.co.uk/cinema-times



Rumours

From 6th December
Starring: Cate Blanchett, Rolando Ravello, Charles Dance.



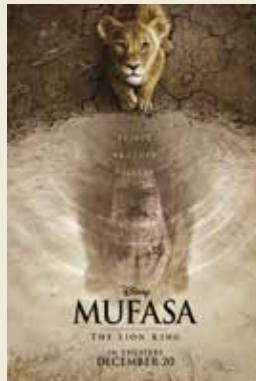
The Lord of the Rings: The War of the Rohirrim

From 13th December
Starring: Brian Cox, Gaia Wise, Miranda Otto.



Kraven the Hunter

From 13th December
Starring: Aaron Taylor-Johnson, Ariana DeBose, Fred Hechinger.



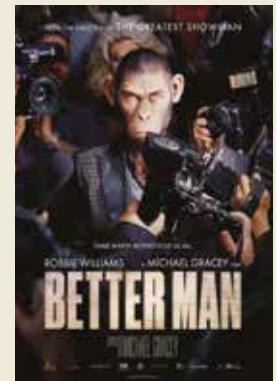
Mufasa: The Lion King

From 20th December
Starring: Aaron Pierre, Kelvin Harrison Jr., Seth Rogen, Mads Mikkelsen.



Sonic the Hedgehog 3

From 21st December
Starring: Jim Carrey, Ben Schwartz, Idris Elba, Keanu Reeves.



Better Man

From 26th December
Starring: Robbie Williams, Steve Pemberton, Alison Steadman.



LIVE ON STAGE - TaleGate - The Snow Queen

Various dates - 14th to 30th December

Parkway Beverley and TaleGate Theatre Productions are once again delighted to invite you to the coolest panto this Christmas- 'The Snow Queen'.

YOUR LOCAL INDEPENDENT CINEMA



JOIN US FOR SOME GREAT FILMS AND BIG SHOWS THIS WINTER

KRAVEN THE HUNTER

Kraven the Hunter is the visceral, action-packed origin story of how and why one of Marvel's most iconic villains came to be. Aaron Taylor-Johnson plays Kraven, a man whose complex relationship with his ruthless father, Nikolai Kravinoff (Russell Crowe), starts him down a path of vengeance with brutal consequences, motivating him to become not only the greatest hunter in the world, but also one of its most feared.

From 13th December.



MUFASA: THE LION KING

Mufasa (Aaron Pierre) wasn't born with blue blood in his veins. In fact, the future king was once an orphaned cub, wandering lost in the Pride Lands of Tanzania with the buzzards circling overhead. By happy accident, as he bobs down a croc-infested river on a sinking log, Mufasa is rescued by the furry princeling Taka (Kelvin Harrison Jr.) and the pair become blood brothers.

From 20th December.



SONIC THE HEDGEHOG 3

Sonic, Knuckles, and Tails reunite against a powerful new adversary, Shadow, a mysterious villain with powers unlike anything they have faced before. With their abilities outmatched in every way, Team Sonic must seek out an unlikely alliance in hopes of stopping Shadow and protecting the planet. Featuring an all-star cast including Jim Carrey, Ben Schwartz, James Marsden, Tika Sumpter, Idris Elba, and with Keanu Reeves joining the franchise as Shadow the Hedgehog.

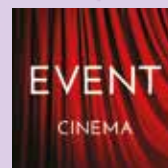
From 21st December.



BETTER MAN

Better Man looks at the rise, fall and resurrection of Williams - one of the UK's bestselling artists of all time. Michael Gracey will shine light on the incredible highs and lows of celebrity and the journey to stardom, inspired by Williams' life and how he sees himself. The fantastical musical will be filled with reimagined versions of Williams' musical hits and iconic performances, with spectacular set pieces and stunning visual effects created by the Academy Award® winning team at Weta FX (Avatar, Lord of the Rings trilogy).

From 26th December.



Event cinema offers something a little different to mainstream films. Live and pre-recorded shows beamed in via satellite from all over the world. Here are the latest live streams that you can enjoy on the big screen at Parkway Beverley.

**Saturday 7th December, 6pm &
Sunday 8th December, 2pm -**

**Andre Rieu's 2024 Christmas Concert:
Gold & Silver**

Celebrate the holiday season with André Rieu's dazzling Christmas Concert, "Gold and Silver," exclusively in cinemas!

**Tuesday 10th December, 7.15pm -
Royal Ballet & Opera: Cinderella PG**

Stuck at home and put to work by her spoiled Step-Sisters, Cinderella's life is dreary and dull. Everything changes when she helps a mysterious woman out... with a little bit of magic, she is transported into an ethereal new world.

**Tuesday 17th December, 7pm -
Royal Ballet and Opera: The Nutcracker
12A**

Join Clara at a delightful Christmas Eve party that becomes a magical adventure once everyone else is tucked up in bed. Marvel at the brilliance of Tchaikovsky's score, as Clara and her enchanted Nutcracker fight the Mouse King and visit the Sugar Plum Fairy in the glittering Kingdom of Sweets.

**Wednesday 15th January 2025, 6.45pm -
Royal Ballet & Opera: The Tales Of
Hoffmann**

Through the haze of the years, a poet remembers the women he loved. But when it comes to matters of the heart, nothing is as it seems. Particularly when the devil himself is involved...

**Saturday 25th January 2025, 5.30pm -
MET Aida**

American soprano Angel Blue headlines as the Ethiopian princess torn between love and country in a new production of Verdi's Aida by Michael Mayer that brings audiences inside the towering pyramids and gilded tombs of ancient Egypt.

**Sunday 2nd February 2025, 2pm &
Tuesday 4th February 2025, 6pm -
Les Misérables - The Staged Concert Live!
(40th Anniversary) 12A**

Featuring an all-star cast, Cameron Mackintosh's spectacular sold-out staged concert version of the musical phenomenon Les Misérables is an absolute must-see!

USING THE GARDEN TO DECORATE THE HOUSE FOR THE FESTIVE SEASON

The Christmas festive season is nearly upon us and the thought of decorating the house comes to mind. The garden in itself can supply us with varying amounts of foliage which can be used to create floral displays that will last for many weeks.



Something as simple as using old branches that have fallen from the trees can perhaps be sprayed in white, gold or silver which will enhance the design. If you wanted to leave them without colour then, they would add both a natural structure and texture to the arrangement. Having access to a holly bush or tree that is bearing berries is a bonus on all levels.

The shape of the leaves on a holly bush work well in any display, especially in the Autumn and Winter months. The addition of the red berries if you have managed to harvest them before the birds, give a wonderful injection of colour! Another valuable asset are the seedheads that remain after the Summer flowers have dispersed and yet still give structure to the garden, such as Rudbeckia fulgida var. sullivantii 'Goldsturm'. These again can again be sprayed if needed to resemble a covering of Winter snow. Likewise, the flowerheads from a Hydrangea can also be used in the house in a dried flower arrangements. This in itself can last for many years and can create a simple yet attractive design.



When drying the heads simply place in a vase or hang them in a bunch upside down in a cool sheltered place and allow them to dry. I often think flower arranging is almost like designing a garden, it teaches you to look outside the box. Having the

ability to create an arrangement perhaps only using only 3-5 flower stems with corresponding foliage is a positive in the garden. It also enables you to look more closely at an arrangement which not only extends the eye but corresponds naturally to the garden and the planting style you would perhaps like to adopt. The benefits you gain from creating a green foliage display and then adding just a few flowers is certainly more cost effective, and in the case of a Christmas decoration lots more can added such as tinsel and models of Father Christmas and Reindeers!

Regarding jobs in the garden, I would make sure all vulnerable plants are either in the greenhouse or in a sheltered position. Also, it may be an idea to purchase some fleece and cover tree ferns or any other tender plants you may have. Plant any perennials or evergreens whilst the soil is still warm. If you have apple trees or pears aim to prune them between November and February, and make sure you remove any rotten fruit. Remember now is the bare rooted season, a good time to plant both fruit and roses.

The photograph was taken in January 2024, an unexpected covering of snow! I wish you all a very Happy Christmas!

<https://ordinarygardener.com> - Julie Dowding



CHAMPNEY TREASURE HOUSE OPENING TO THE PUBLIC 10TH DECEMBER

Champney Treasure House, the newly renovated cultural venue in Beverley, opens its doors to the public on Tuesday, 10th December after an essential period of renovation.

Champney Treasure House has been renamed in honour of John Edward Champney, a local businessman who in the early 20th century made several significant donations to the original Beverley Public Library and Art Gallery.



The renovated building will become a centre for learning and discovery, housing the many services provided and celebrating the diverse and vibrant cultural offer of the historic venue.

The £3.3 million scheme has enabled the council to make significant improvements to the much-loved museum, archives, café area, tower viewing point, gardens and art gallery whilst relocating and introducing other services to the Champney Treasure House such as the Changing Places facility.

For details on the Champney Treasure House renovation and to explore upcoming events, visit: www.eastridingculture.co.uk/treasurehouse

MR CARPETS

CARPET AND FLOORING SPECIALISTS

TAKE A LOOK AT OUR QUALITY INSTALLATIONS

We wish everyone a Merry Christmas and a Happy New Year

Check out our Facebook and Google reviews

01482 872134

f mrcarpetsbeverley

E: mrcarpets@hotmail.co.uk
 3 Becks North, Beverley, HU17 0PR

LAIRGATE PROPERTY LOOKS TO THE FUTURE

Refurbishing historic listed buildings is crucial for preserving cultural heritage, providing a tangible link to the past that can educate and inspire future generations.

By revitalising these structures, we honour architectural achievements and craftsmanship while adapting them for modern use.

Currently on Lairgate R D Stott Architects have taken on the challenge to refurbish and breathe new life into the old 1843 Beverley Savings Bank, converting it into two luxury residential developments, which will make beautiful new homes for the future occupants in 2025.



Richard commented, "When approaching listed buildings, we aim to be adaptive, converting old buildings into functional spaces like hotels, offices, or as in this case residences, adding vibrancy while respecting and conserving the past. The environmental benefits are significant, as refurbishing often has a lower carbon footprint compared to new construction".

Richard continued, "Importantly, with this project we have been able to preserve or restore many traditional

features, using traditional trades, nurturing expertise that might otherwise be lost. Overall, refurbishing this historic building has allowed us to respect the past while meeting contemporary needs, creating a sustainable approach to urban development and cultural continuity. I hope whoever chooses to live here will be delighted with its transformation, reflecting on the past while looking to the future".

Watch this space and stay tuned as the property looks forward to a new lease of life.



BISHOP BURTON COLLEGE CELEBRATING 70 YEARS OF DELIVERING SPECIALIST EDUCATION

Bishop Burton College is celebrating seven decades of providing specialist land-based education in East Yorkshire.

The college, near Beverley, is marking its 70th anniversary this academic year. Bishop Burton, which specialises in agriculture, engineering, equine and sport, will be hosting a huge event open to the public in the spring to celebrate the milestone.

Principal and CEO Danny Metters said, "The platinum anniversary provided an opportunity to reflect on the college's proud history, acknowledge its evolution, and look forward to a bright future".



He said, "It's a massive and hugely significant milestone for us, and one we're very excited to celebrate with all our students, staff, partners and stakeholders. It gives us a chance to look back on what we've achieved for our students and our community, focus on who we are as an organisation at this point in time, and look ahead to move Bishop Burton onto the next chapter".

Ian Sackree, Chair of Governors at the college, said, "I'm delighted to be Chair at Bishop Burton during its 70th year - celebrating seven decades of success. Whilst other colleges are older than ours, the significance of the role Bishop Burton has played since being established in the post Second World War era cannot be understated.

"Bishop Burton remains as important now as it was when it was formed, and we're proud to continue our work with students, businesses and employers to ensure the agricultural and land-based sector has the skills it needs to both survive and thrive in the next 70 years."

For more information about Bishop Burton College, visit www.bishopburton.ac.uk



LEWIS NORTHEN FUNERAL DIRECTORS TAKING CARE OF YOUR FAMILY

Four years ago on 1st December 2020, Lewis Northen, having spent 10 years as a Funeral Director, took the bold step to set up his own Funeral Directors.

As a well-known Beverley funeral director at that time, Lewis commented, "I decided to launch my own independent locally based family company to focus on giving the personal touch to funeral services in Beverley and the surrounding areas.

"I am amazed at how quickly the last four years have flown by and take this opportunity to thank everyone for their kind words and look forward to my family taking care of yours for many years to come".

Lewis Northen Funeral Directors has developed an unrivalled reputation in the town looking after families and in supporting families, delivering a funeral service that will meet each family's individual needs.

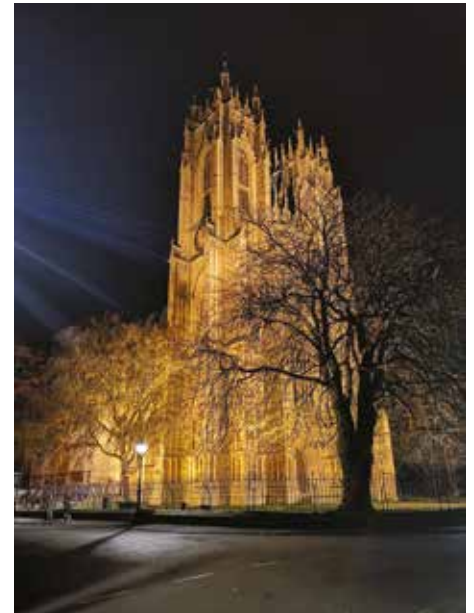
Lewis commented about his Annual Christmas Memorial Service, "Especially at Christmas time, I believe family memorial services hold a deep significance offering time for loved ones to come together and honour the memory of someone who has passed. These gatherings provide a safe space for reflection, where

family and friends can share their stories, support each other."

Everyone in the community is welcome. Lewis commented: "These services are not just about mourning but a celebration of love and giving thanks for the lives of our loved ones."



The Annual Christmas Memorial Service at Beverley Minster on Wednesday 18th December at 6.30pm will include Christmas Carols and give the opportunity to light candles in memory of loved ones who are at



rest. Anyone wishing to attend please contact LNFD and let them know in advance, to give an indication of numbers.

Please call the office on **01482 888658** or email: info@lewisnorthyfuneraldirectors.co.uk

Following the Memorial Service, everyone is warmly invited to stay for complimentary refreshments.

Wednesday 18th December at 6.30pm at Beverley Minster.

LEWIS NORTHEN
FUNERAL DIRECTORS



MY FAMILY TAKING
CARE OF YOURS



Get In Touch
1 Lincoln Way, Beverley, HU17 8RH
info@lewisnorthyfuneraldirectors.co.uk
www.lewisnorthyfuneraldirectors.co.uk
01482 888 658



Born and raised in **Beverley**, we are proud of the funeral services we offer to our local community.

As a family business we want you to have confidence in us to support you from the first point of contact, throughout and thereafter. The moment your loved one comes into our care they will be treated with care and respect. We offer a comprehensive range of funeral services ensuring you receive the perfect funeral service for your loved ones.

We are available 24 hours a day, 365 days a year, we will guide and support your family throughout.

My family taking care of yours

Giving the personal touch to funeral services in Beverley and surrounding areas.

Funeral plans, memorial jewellery, available 24/7 365 days a year.



LINKAGENCY - A SIGN TO MOVE FORWARD

As we look forward to the festive season, Christmas and New Year, if selling your house is high on the agenda, LinkAgency's Personal Independent Estate Agents offer a unique, bespoke approach to selling homes, including the specialised service of "dressing" or staging properties.

Jayne at LinkAgency has an in-depth knowledge of the local market, she understands how to showcase a property's best features to appeal to specific buyer demographics.

Jayne mentioned, "House dressing involves arranging furniture, decor, and lighting to create an inviting, welcoming atmosphere, helping potential buyers envision themselves living in the space".

Unlike larger agencies, Jayne at LinkAgency works closely with clients, dressing the property, to not only enhance the property's aesthetic appeal but also to increase its perceived value, often leading to quicker sales and higher offers. This attention to detail and customer liaison sets Jayne apart from other agents, focusing on a positive future.

From Sale to Sold, Jayne is there to help every step of the way.



Jayne at **linkagency**

PrimeLocation ZOOPLA OnTheMarket rightmove

linkagency Sold
01482 699007
www.linkagency.co.uk

linkagency For Sale
01482 699007
www.linkagency.co.uk

Have you seen these signs?

"I dedicate my time and energy to clients throughout their property selling and buying journey, giving them the comprehensive, professional service they deserve."

01482 699007 (Beverley and Surrounding Villages)
www.propertyjayne.co.uk | jayne@linkagency.co.uk

naea | propertymark



RM JOINERY KITCHENS & BEDROOMS

QUALITY WORKMANSHIP FOR ALL YOUR FITTED FURNITURE NEEDS



Merry Christmas and a Prosperous New Year

KITCHENS • BEDROOMS • HOME STUDIES • BATHROOMS

Visit Our Showroom: Hull Bridge Road, Tickton HU17 9RT

01482 867389

FREE HOME VISITS & DESIGN SERVICE

rm.joinery@yahoo.co.uk | www.rmjoinerykitchens.co.uk



UNDERSTANDING WHAT THE AUTUMN BUDGET MEANS FOR YOU

Rachel Reeves has delivered her first Budget as Chancellor, and the first Labour Budget in 14 years. It brings some clarity and certainty following many weeks of speculation.

The Government has had to balance a challenging fiscal situation with a plan to invest for the future and for growth. The Chancellor has increased taxes by a record £40bn and increased borrowing to £127bn for this tax year. Alongside the headline changes to minimum wage, fuel duty and increased spending for public services there were several changes that may affect you.

Capital Gains Tax

Amid much speculation, Capital Gains Tax (CGT) has been increased with immediate effect to 18% for basic rate tax payers and 24% for higher and

additional rate tax payers. CGT on residential property remains unchanged. This means that, especially with the already reduced annual exemption and dividend allowance, the power and value of tax incentivised pensions and ISAs is even greater.

Inheritance Tax

The Inheritance Tax (IHT) threshold freeze of £325k (or £500k if it includes a residence left to a direct descendant) has been extended to 2030, meaning that more estates will be drawn into the IHT regime. The first £1m of combined Business and Agricultural assets will be IHT free with values in excess of this only benefitting from 50% relief. Alongside increases to the Business Asset Disposal Relief on disposals to 14% in April 2025 and again to 18% the following year,

many business, farmers and landowners may find themselves subject to IHT. As was always the case, these assets should be considered together with other ways to plan for tax effective intergenerational wealth transfer where the investor wishes to retain control over and access to the assets being planned with.

Pensions

With regards to pensions, there were two changes of note, the first is most likely to be of greatest interest, which is the inclusion of pension death benefits in inheritance tax calculations and charges, proposed from April 2027. This will not impact those receiving an income from a defined benefit pension scheme, or those that receive ongoing annuity payments following the death of the original annuitant.

It will, however, generally impact all other pension death benefits, including death in service payments from pension schemes. The scheme will pay the charge before allocating or paying the residual and the usual exemptions if left to a spouse will apply.

The second pension change comes into immediate effect and only relates to transfer of pension funds to the EEA, where you remain UK resident. The change means that this will be significantly less favourable but in line with transfers to other parts of the world.

Stamp Duty Land Tax

The Stamp Duty Land Tax has been increased for second homes from 3% to 5% with effect from 31 October 2024.



Achieve the future you want

We all imagine our future differently.

Whatever your goals, we believe there is value in taking advice from someone you trust. We will work with you to plan, grow and protect your financial future.

Let's start a conversation.

Navigation Wealth Management

01482 379504

navigationwm@spp.co.uk

www.navigationwm.co.uk



Navigation Wealth Management is an Appointed Representative of and represents only St. James's Place Wealth Management plc (which is authorised and regulated by the Financial Conduct Authority) for the purpose of advising solely on the group's wealth management products and services, more details of which are set out on the group's website www.sjp.co.uk/products. The 'St. James's Place Partnership' and the titles 'Partner' and 'Partner Practice' are marketing terms used to describe St. James's Place representatives.

Non-Dom status

The Government's decisions to abolish the 'non-dom' status and end excluded property trusts in today's Budget could have an impact on the number of UK high net worth individuals settling long term in the UK, which could have a knock-on impact on the UK's high end property market. The provisions are relatively complex and specialist advice in relation to those affected will be essential.

Income Tax and National Insurance

The Chancellor reaffirmed Labour's manifesto promise that 'working people' would not pay higher income tax or National Insurance (NI), they did confirm that the current freeze on thresholds will end in April 2028, but until then more people will continue to be pulled into paying increased tax.

The Government did, however, aim their biggest tax increase at employers, increasing employer NI contributions from 13.8% to 15%. This, alongside a drop in the threshold at which employers start to pay NI from £9,100 to £5,000 is expected to raise £25bn.

For Business Owners, consideration should be given to taking dividends rather than salary, and how to best extract funds from their business. The scope for savings from employing the spouse/partner has been reduced as the secondary threshold has been dramatically lowered. Existing arrangements should be reviewed in light of this change. As always advice will be essential.

Overall, this has been a big Budget that will have long lasting ramifications. This has not been an easy Budget for those who are attempting to save and invest for their future. Given the changes announced today, many people will rightly be trying to understand what it means for them and how it might change their own personal financial plan - please feel free to get in touch: **Navigation Wealth Management, 01482 379504 | navigationwm.co.uk | navigationwm@sjpp.co.uk**

The value of an investment with St. James's Place will be directly linked to the performance of the funds selected and may fall as well as rise. You may get back less than the amount invested. The levels and bases of taxation and reliefs from taxation can change at any time and are dependent on individual circumstances.



Monks Walk Inn

19 Highgate, Beverley HU17 0DN
Tel: 01482 880871
www.monkswalkinn.com

Facebook: Monks Walk Public House | Instagram: monkswalk

Merry Christmas and a Happy New Year
to all our friends, neighbours and customers

Thank you for your support in 2024

Enjoy some Christmas cheer around our real fire

- GOOD BEER •
- GOOD COMPANY •
- GOOD CONVERSATION •



WE LOOK FORWARD TO SERVING YOU!

Jadan

Print that gets you noticed

**BROCHURES LEAFLETS
POSTERS CALENDARS PADS
LARGE FORMAT PRINTING
STATIONERY MAGAZINES
SAFETY SIGNAGE BANNERS
LABELS DIE-CUTTING
and much much more**

2025 CALENDARS NOW AVAILABLE



Calendars are one of the most effective ways of advertising and a fantastic way of placing your brand or cause in front of the customer for a whole year.

From Desktop Calendars to Wall Calendars and Wallplanners, we can design and print in a range of formats and sizes to suit your brand.

01482 610902
sales@jadan-press.co.uk www.jadan-press.co.uk
Rainbow House, Kimberley Street, Hull, HU3 1HH

Instagram: jadan_press | X: jadanpress | Facebook: jadanpress

JOY TO THE WORLD

Last Saturday, after 5 minutes of baleful pleading, I opened the door to let Trevor the cat out into horizontal, freezing rain. He gave me a withering "seriously" look, turned tail and shot back in.



For me the decision was made to stay warm and focus on Christmas planning. On Sunday I ventured out to a Victorian Christmas market at Burton Constable Hall with a friend and came back broke but with lots of unique gifts, personally chosen with care.

The experience of immersing myself in the day, chatting to the stallholders and browsing the wares was a pleasure in itself. I hope to repeat the experience at the Beverley Festival of Christmas on Sunday 8th December and also at the Ferguson Fawcett Christmas Fair in Walkington on Sunday 15th December - I just love the cozy, earthy aroma of wood-burning fires there and shopping with friends is much more fun.

In the hustle and bustle of Christmas shopping, take time to use your senses and notice what is particularly pertinent to the season. The smell of roasting chestnuts, mulled wine, pine needles, satsumas, cinnamon and cloves; the sights of holly and mistletoe, reindeer, stallholders in Victorian dress evoking Dickensian story telling of Christmas past and future, twinkling lights and decorated Christmas trees. The festive season can have moments of stress so drop into the senses and watch the world go by for a moment or two and breathe.

My personal Christmas do's and don'ts are to shop locally where I can and pay cash, as the fees incurred by using my debit/credit cards can add up for small businesses who are already stretched. With presents for children, I often ask the child/parent what they would like, as a contribution to a riding lesson or new football boots or ice-skates might be the perfect gift.



Christmas is a time to meet up with friends and family, share experiences and make lasting memories, so with the Minster Christmas Tree Festival taking place from Wednesday 4th to Sunday 8th December I'll be seeing who's free to go along and drink in the smells of Frankincense, Myrrh and appreciate the Nativity story whilst admiring the Christmas Tree display.

Presence not presents is also a mantra that I have and creating shared experiences to be anticipated in the New Year such as afternoon tea, a visit to a wildlife park, an art or jewellery-making workshop or trip to the theatre at one of the many fantastic local venues we have can be looked forward to with excitement and anticipation as we enter 2025.

If you're sending Christmas cards/e-mails, it's an opportunity to set up those future family and friends events - "let's run off the Christmas excesses at the Beverley Park run on 4th January" - make it happen rather than say "we must get together".

If you're looking for an unusual present or want to give the gift of peace of mind, I offer hypnotherapy gift vouchers so check out how other people have been helped (**All About You Hypnotherapy - Google Search**) and of course, every Tuesday, you can take time out for yourself with the free mindfulness session from 7.15 pm to 7.45.

For more information visit www.francesdunning.com or contact me, Fran Dunning on **07973 819867** for details of mindfulness zoom link.

Global peace around the world begins with peace within each one of us. May I wish you a happy, healthy and peaceful Christmas and New Year.

All About You Hypnotherapy

Helping You Get Peace of Mind in Practical Ways

I've been helping people of all ages increase their levels of confidence and improve their life for over 20 years using hypnotherapy.

I can help you reduce anxiety, get rid of fears and phobias and embed positive habits to increase your levels of health and wellbeing.

Based on Victoria Dock and available face to face or via Zoom globally.

Let me help you to enjoy a new sunrise

Fran Dunning
Clinical Hypnotherapist & Provider of Mindfulness in the Workplace
Victoria Dock, Hull
Mobile: 07973 819867
e-mail: info@francesdunning.com
website: www.francesdunning.com

Scarlet & Lily

Family-run shop in Flemingate, Beverley

Large selection of Handpoured Candles, Wax Melts, Bath Bombs and Soaps available in store.



Recycling Scheme: Return packaging and used wax (from our products) for cashback or store credit

Mon-Sat 9:30am-4:30pm
Sun 10:30am-4pm

Shop online at www.scarlet-lily.co.uk with code 'JUSTBEVERLEY' for free local delivery

CHRISTMAS AT THE FERGUSON FAWSITT

Allen at The Ferguson Fawsitt knows only too well that village pubs are a cornerstone of community life, especially during the festive season.

During the Festive season as we move towards Christmas and New Year, they become even more significant as they offer a warm, welcoming place where residents can gather, celebrate, and connect.

Many people view the local pub as an extension of home during the holidays, where familiar faces, festive decorations, and traditional foods create a comforting, joyful atmosphere.

Allen commented, "We have put a focus on entertainment during the festive season, with live

music, quiz nights, food and craft fair, comedy and the all important New Years Eve Party. These Christmas themed events, we hope will enhance the sense of celebration and camaraderie in the village and beyond."

At The Ferguson Fawsitt they look to bring together people of all ages, helping to alleviate loneliness for those who may not have family nearby and in short develop a festive spirit.

In Walkington where access may be difficult depending on weather, increasing a variety of activities and festive gatherings at "The Fergie" are especially valuable, to strengthen the bonds that keep the community vibrant, resilient, and connected during the festive season and well into the New Year.



The Ferguson Fawsitt



OPENING HOURS

MON & TUE:
16:00 - LATE
WED - SAT:
09:30 - LATE
SUN: 12:00 - 22:00

What's on at the Fergie

- 1st Thursday of the Month - Bingo from 2pm
- 4th Thursday of the Month - Live Music
- 1st Friday of the Month - Quiz Night from 8.45pm
- Sunday 15th December - Fergie Christmas Food and Craft Fair
- Sunday 22nd December - Stand Up For Comedy
- New Years Eve - Holly Tandy

Wishing Everyone a Merry Christmas and a Happy New Year



TUESDAY TO SATURDAY:
AFTERNOON TEA 12PM to 5PM
www.fergusonfawsitt.co.uk
tel: 01482 526317



FOOD HOURS

WED - SAT:
09:30 - 19:30
SUN:
12:00 - 18:30

A WINTER WALK - WITH A TWIST OF VENOM

Choose a fine day for this lovely 6.5 circular walk which explores 2 fascinating East Riding villages and some beautiful landscapes.

It's perfect for a Winter's day as much of it is along very quiet, mercifully dry, lanes. The paths used are likely to be muddy, so go well shod. An ideal way to access the route to/from Beverley is to use the regular and inexpensive X46 bus. Motorists can find ample parking on the main village street. Londesborough is a gorgeous and notably tranquil spot, full of history, Shiptonthorpe whilst attractive, has a dark secret!



1 Start at the handsome All Saints village church, just over the road from the bus stop. This has a striking medieval tower and its Norman origins are on show inside the porch, sadly it may not be open to view.

From the churchyard head north up the main village street, which has a lovely collection of period architecture. When you know a little of the recent story of the poison pen letters it adds a sort of Agatha Christie like mystery to your stroll. There have been a dozen or so very unpleasant letters sent to villagers in recent times, presumably by the same hand. The case is similar to that featured in the period film, *Wicked Little Letters*, which I saw at our Parkway Cinema earlier in the year.

The Shiptonthorpe ones are well covered in national and regional media stories which can be accessed online. One can only hope that they have now ceased. At the green area with a bench, take the lane to the right towards a farm, with a commendable milk vending service.



2 Look for a finger post pointing to your diagonal route across fields, it is just past the farm buildings on your left. This leads through a boundary hedge and skirts a wood. It gently rises towards Londesborough with the swell of the Wolds beyond.



3 Upon reaching the road, turn right and head downhill for around 400 metres until you reach the attractive lodge.

4 Follow the clear path on your left that goes through the lovely grounds of Londesborough Hall. There is a large lake to your right and the scant remains of the demolished hall to your left, the terrace here is still intact and very striking.

The estate was briefly owned in the mid-nineteenth century by George Hudson, the Railway King. Then follow the path as it curves left to reach the village. Enjoy a wander around the upper and lower terraces of this fine estate village. It was looking stunning on a fine day in late October when I was last there.



5 At the crossroads at the head of the village, go straight on towards Burnby, which is also the route of the Wolds Way. The views from this elevated perch across the Vale of York are magnificent. After a half mile the road drops into a valley.

6 At the bottom of the hill on your right is a gate that affords access to the magnificent dry valley of Cleaving Coombe. This is open access land, so you can wander at will. I suggest sticking to the path on the far left rim of the valley. This is one of the most dramatic landscapes in the entire county and a joy to walk.

7 All too soon a gate gives access to the quiet road that heads down to Londesborough, there is attractive woodland on your left.

8 Back at the village crossroads, you have a choice either continue down the road the mile back to Shiptonthorpe or pick up the path back you walked earlier.

9 Back in the village, hopefully having walked off some seasonal calories, it's hard not to ponder on whether the culprit in the letters case is behind one of the house doors.

Ian Richardson, November 11th 2024.



HOME INSTEAD - COMBATING SCAMS AND KEEPING OLDER PEOPLE SAFE

It's easy to assume we are savvy when it comes to fraud and scams, and expect that we'll never be caught out and can spot a scam a mile off. Sadly, scammers are becoming increasingly more sophisticated, employing new tactics and methods to gain our trust.

Our older loved ones are particularly at risk, as scammers can seek them out. Unfamiliarity with the online world can play a part too. If families club together and talk older loved ones through what to look out for, they can protect them from becoming victim. It all lies in knowing the signs to spot.

Types of fraud and scams to look out for:

Fraud and scams are continuously developing, so it's important to stay alert and vigilant. Some of these can include:

1. Impersonation Scams

Scammers pretend to be trusted figures, such as family members or officials, to steal personal information or money. Always verify identities before sharing details.

2. Purchase Scams

Fake online listings trick victims into paying for non-existent products. Research sellers and use secure payment methods to avoid losses.

3. Investment Scams

Fraudsters promote fake investment opportunities with promises of high returns. Always consult a financial advisor before investing.

4. Romance Scams

Scammers build online relationships and ask for money for emergencies. Be cautious of anyone you haven't met in person who requests funds.

5. Doorstep Scams

Fraudsters visit homes pretending to be tradespeople or charity workers. Verify their identity before engaging and don't feel pressured.

6. Courier Fraud

Scammers claim to be from banks or police and ask for cash withdrawals, often sending a courier to collect it. Legitimate organisations won't request cash.

How Can You Protect Yourself from Fraud and Scams?

1. Avoid Disclosing Security Details

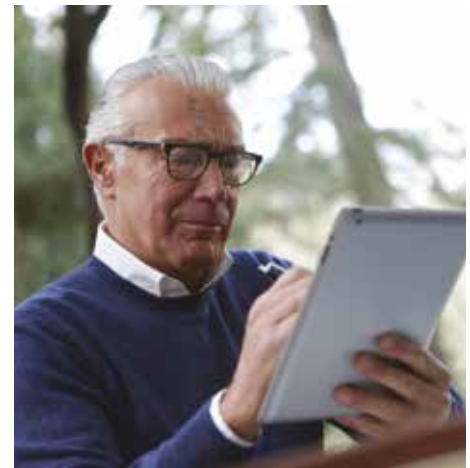
Never share personal information like passwords or bank details over the phone or online.

2. Check Authenticity

Be wary of unsolicited emails or messages; verify the sender's identity before responding.

3. Contact Organisations Directly

Use official contact information to confirm any suspicious communications. If somebody rings you and you have doubts over whether they are who they say they are, call them back using the organisation's official phone number. Use another phone if possible in case they have tapped into and have control over your phone.



4. Challenge Unexpected Requests

Trust your instincts - if something seems off, verify before acting.

5. Report Scams

Report any suspicious activity to local authorities or organisations like Action Fraud to help protect others. You can do so here: www.actionfraud.police.uk

Sadly, many scams go unreported due to the victim's fear of embarrassment. But by being open and honest about scams with your older loved ones, they will feel more compelled to check with you if they ever have any suspicions.

For more information please call Home Instead on **01482 231145** or email office@beverley.homeinstead.co.uk. You can also find information on Home Instead's website www.homeinstead.co.uk/beverley-hull



To us, it's personal

Live well, your way

Start your home care journey with Home Instead® today

♥ Live In Care

♥ Personal Care

♥ Companionship

♥ Dementia Care

01482 231145

[office@beverley@homeinstead.co.uk](mailto:office@beverley.homeinstead.co.uk)



Each Home Instead franchise is independently owned and operated. Copyright © Home Instead® 2021

FLEMINGATE CHRISTMAS LIGHTS SWITCH ON



MARKET CROSS CHRISTMAS LIGHTS SWITCH ON



WHITE RIBBON AWARDS 2024



I'VE BEEN THINKING... SAYS COLIN RAYNOR

I found a two pound coin on the ground the other week. I confess to thinking only briefly who it would have belonged to because soon after it helped me to pay for yet another truly extortionate car park ticket. But it did, I confess, revive a memory from my childhood.

"Honesty is the best policy" was one of my mother's favourite sayings but I made a discovery one day that created, even in my young mind, a real dilemma. I was just ten years old when I found two five pound notes on my way home from school. In those days five pound notes were like big white handkerchiefs but I nearly missed these two notes wrapped together in the gutter both wet through and covered in dirt.

Although I had immediate childlike thoughts of what I could buy at the local shop I also knew that if I did, in the strange way adults have of knowing everything that children get up to, my mother would find out and I would be in trouble. After all, a ten year old with five pound notes. No chance.

So, I gave them to her when I got home. She gave me a big hug and a kiss and told me tea was ready.

I don't know what happened to the five pound notes. I think my mother said something about putting them out to dry and then taking them to the police station so that the person who had lost the money could get it back.

My mother always had an answer so I trusted her completely. But I have never forgotten that little incident and have often wondered, when the fivers dried out, did my loving mum really take them to the police station? As the years went by and my mum and I didn't always see eye to eye on things, I was often tempted to ask her. But I never did. Was it because I didn't want my mum to admit she had kept them for herself? Would that have affected the way I thought about my mum?

How could such a small incident as I have described be part of my conscience, if that is what it was, throughout my adult life.

I have sometimes asked myself if my sainted mother's homily about honesty stopped me from getting into trouble or deprived me from having a more dangerous and even colourful life. We frequently call for a person in public life to be truthful and honest. Are they the same? If that

person does indeed speak his or her mind they may cause trouble that could have so many unnecessary repercussions. I wonder if honesty is always the best policy. Over to you dear reader.

Discuss. Putting together words from the Catholic theologian Henry Newman and phrases often used by a beloved Baptist minister, Rev Tasker Lewis (who married Doreen and myself nearly 60 years ago) and some words of mine, I think it appropriate to offer you a Grace to close my column this month.

"Go forth into the world with love in your heart. Render to no man or woman evil for evil. Help the faint hearted and truly support the weak. May you be guided every day long of this wondrous life until the shadows lengthen, the evening comes, this busy world is hushed, the fever of life subsides and your work is done for another year.

"Every blessing to you as we leave 2024 and trust there will be safe lodging and true peace at the last in 2025".



COUNTRYSIDE MATTERS WITH SAM WALTON

I have always thought that Dairy Farming was by far and away the hardest part of farming life, early mornings and seven days a week, with the price received for milk way under where it should be.

With modern technology, there seems to have been an improvement and opportunity break through, which hopefully will enable the dairy industry not only to survive but to prosper, if that is not too big a word. I remember learning how to milk a cow by hand when I was six years old, where I guess most herds were then milked by hand.

At the recent UK Dairy Day Event, there was apparently much better hope for the future. Genes will still play an important part as with any form of livestock and apparently at the recent event called "The Opportunities" showed the determination by focusing on the future and select cattle for their fat, protein and wider health traits rather than just focusing on milk yield, as yields can be improved by farming systems and good facilities.

Robotic milking systems and technology such as smart collars which monitor temperature, activity and behaviour were recommended, especially for those farms looking to reduce staffing costs. Robots can replace a labour unit and can monitor animals for any health or welfare issues.

It had apparently been mentioned that because of the long hours worked, some staff were somewhat reluctant to work a six-day sixty hour a week. There were suggestions that with modern technology, it should be possible for the industry to generate more 35/40 hour jobs to encourage staff retention.

As milk is a daily requirement and as we expect it to be there seven days a week, it is very encouraging to find that something is being done about it and how it is being produced. At long last after years of being underpaid for milk, a better price is now being paid.



We wish you all a Merry Christmas and a Happy New Year.

We will be closed from Christmas Eve, and we will reopen on Monday 6th January 2025.

Should you wish to purchase any of our ice cream for the Festive period, call into your local stockist today.

From all the team at Burgess Ice Cream, thank you all for your custom this year. We look forward to working with you in 2025.

Please call us on 01430 872894 or email: sales@burgessicecream.co.uk or check our website



LECONFIELD KENNELS AND CATTERY WELCOMES BARKING BUBBLES GROOMING SALON

During November Leconfield Kennels and Cattery undertook its annual deep cleanse and refurbishment to maintain a healthy and comfortable environment for all the animals and to maintain a good environment for all the staff to work in.

Nigel commented, "Over time, kennels can accumulate dirt, bacteria, parasites, and allergens that pose health risks to both animals and staff. A thorough clean helps eliminate harmful pathogens, preventing the spread of diseases like kennel cough, parvovirus, and skin infections. This process involves not only disinfecting all surfaces but also replacing worn-out bedding, toys, and flooring, which can harbor germs and contribute to wear and tear".



During this period the refurbishment ensures that all structural elements are secure, minimising potential hazards or weakened enclosures. Updated materials also enhance comfort, reducing stress levels in animals, which is crucial for their mental well-being.

By committing to regular deep cleans and refurbishments, Leconfield Kennels and Cattery kennels demonstrate a high standard of care, ensuring the safety, health, and happiness of



animals, which is essential for client trust and business reputation.

New and now open and taking bookings - Barking Bubbles Dog Grooming Salon.

Nigel said, "We are delighted to welcome Megan and her business to our Kennels, offering a high quality grooming service in kennels provides numerous benefits for both pets and their owners. Grooming keeps animals clean, comfortable, and relaxed".

Megan commented, "Regular grooming sessions help monitor pet health, we can spot early signs of conditions such as ear infections, skin allergies, or lumps, having qualified to level 3 in Dog Grooming and having a Pet First AID qualification ensures our clients' pets are in good hands".

Anyone who has a pet understands how important they are to their family, when the time arrives for the pet to go into the Kennels, it is a relief to know they are being well cared for. With the New Salon now open at the kennels, it is really a home from home.

The grooming service enhances their comfort, making the stay more pleasant and stress-free. Additionally, owners enjoy the convenience of picking up a freshly groomed pet, which strengthens customer satisfaction and loyalty.



Megan commented, "We have a fantastic offer running through to 15th January 2025, 20% OFF your first appointment with the Salon."

Since Nigel and Jo took over the Kennels and Cattery they have continued to develop and grow their reputation, with many of their clients commenting and referring them to their family and friends.

With a routine schedule of thorough cleaning with pet-safe products, creating a safer and more enjoyable space for pets and staff, adding a high quality Grooming Salon to the services available is another vital aspect to the growth of Leconfield Kennels and Cattery.

Nigel summed up by saying, "Together, with an ongoing commitment to kennel maintenance, professional grooming services, this demonstrates our dedication to animal welfare, attracting pet owners who want the best for their animals and enhances our trustworthy reputation".



Leconfield Kennels and Cattery, Arram Road, Leconfield, HU17 7NP
Office: 07360 276707
Out of hours: 07946 193269
Web: www.leconfieldkennelsandcattery.co.uk

To Book Barking Bubbles
Call: 07500 931566
Email: barking_bubbles@outlook.com
Web: www.barkingbubbles.co.uk
Instagram and Facebook: [@Barking_bubbles_](https://www.instagram.com/Barking_bubbles_)



NEW BEGINNINGS: VICKI HOPPER AND LIV GARNER JOIN ANCORA LAW

At Ancora Law, we pride ourselves on building a team of talented professionals who bring unique perspectives and skills to the table.

This year, we are thrilled to welcome Vicki Hopper and Liv Garner, two exceptional individuals who are embarking on their legal journeys with us. Their diverse backgrounds and fresh enthusiasm perfectly align with our commitment to innovation and excellence in the legal field.

Vicki Hopper: From Sales to Legal Excellence

Not all career paths follow a straight line, and Vicki Hopper's story is a shining example of the power of reinvention. After achieving significant success in Sales and Marketing, Vicki decided to turn her



Vicki Hopper

long-held passion for law into a reality, embarking on an exciting new chapter in her professional journey.

With years of experience building strong client relationships and understanding their unique needs, Vicki brings a wealth of transferable skills to her role at Ancora Law. Her natural empathy and strategic approach make her a valuable asset, ensuring she connects with clients and delivers outstanding support.

We're proud to have Vicki on the team and look forward to seeing her thrive in this next stage of her career.

Liv Garner: A Rising Star with a Bright Future

For Liv, joining Ancora Law marks the start of what promises to be a stellar legal career. A recent graduate of the University of Hull, where she earned First Class Honours in Law, Liv's academic success speaks to her dedication and intellectual acumen.

As a Trainee Paralegal, Liv is immersing herself in the practicalities of the legal field, gaining hands-on experience by assisting with a variety of cases. Her ambition to qualify as a Solicitor reflects her determination to make a meaningful impact in the legal profession.

Why Their Stories Matter

Vicki and Liv represent two sides of the same coin: an experienced professional making a



Liv Garner

bold transition into a new field, the other a fresh graduate eager to make her mark. Their journeys remind us that success in the legal profession isn't defined by a single path but by the passion, commitment, and resilience brought to the role.

As they settle into their roles, we're confident that Vicki Hopper and Liv Garner will become integral members of the Ancora Law family.

Their contributions will not only strengthen our team but also inspire others considering their own paths in the legal world.

Here's to new beginnings and the bright futures ahead for Vicki and Liv!



**Ancora Law, Minster House, Flemingate, Beverley, HU17 0NT.
T: 01482 426121
W: ancoralaw.co.uk**

SSAFA - PAST, PRESENT, FUTURE. CAN YOU HELP?

SSAFA, the Armed Forces charity, provides vital support to military personnel, veterans, and their families during Christmas and New Year. Recognising that the festive season can be especially difficult for those who have served or are currently serving.

SSAFA offers both emotional and practical assistance to ensure no one feels isolated or unsupported. For families coping with a loved one deployed abroad or dealing with the challenges of reintegration, SSAFA provides counseling, outreach, and a compassionate ear.



Over and above all the emotional support, additionally, SSAFA offers financial aid to those struggling, helping with essentials like food, heating, and other festive, Winter expenses. This support extends to veterans and their families, especially those facing hardship or loneliness.

SSAFA needs volunteers, volunteers who work tirelessly to create a sense of community, arranging festive gatherings and support networks, bringing cheer and connection to military families and veterans who might otherwise feel left out during the festive season.

We are looking for: **Branch Chair, Branch Secretary, admin support and caseworkers.** If you feel you can help, get in touch.

SSAFA are looking for your help - can you offer support?

Tel: **01964 552 837**
Email: eyorks.branch@ssafa.org.uk
Website: ssafa.org.uk



ssafa the Armed Forces charity

We wish you a Merry Christmas and a Happy New Year

Your Veterans Need You!

SSAFA are currently looking for volunteers to fill the following positions:

- Administration Assistant
- Branch Fundraiser or Coordinator
- Branch Volunteering Coordinator
- Caseworkers
- Divisional Secretarial Support
- Mentors
- Recruitment Coordinators
- Treasurer Support

SSAFA urgently need a Branch Chair, Branch Secretary, admin support and caseworkers.

The Branch Secretary serves as key figures in supporting those who have served their country, ensuring they receive the assistance and resources when in need after protecting our country.

It's a role that requires dedication, compassion, and a commitment to serving others, offering immense personal satisfaction and the opportunity to positively impact the community.



If you think you can help, please get in touch:

Tel: 01964 552 837
Email: eyorks.branch@ssafa.org.uk
Website: ssafa.org.uk

Your home for **KITCHENS & BATHROOMS**

Visit our displays and speak to one of our specialists to see how we can help you create your dream home.

Swinemoor Lane **Beverley**
HU17 0JZ **01482 880088**

FREE
LOCAL
DELIVERY

mkm.com

MKM

WHY TURKEY IS EATEN FOR CHRISTMAS DINNER IN THE UK

The tradition of eating turkey at Christmas is a relatively recent development in British history, yet it has become a staple of the festive season.

Historical Background

The tradition of eating a special meal at Christmas dates back to medieval times when the celebration of the Nativity was marked with feasts. However, turkey was not originally the centerpiece of these meals. Instead, the wealthy dined on boar's head, swans, geese, or even peacocks, whilst the poorer classes ate what was available locally such as: chicken or beef.

Turkeys were introduced to Britain in the early 16th century, having been brought from the Americas by Spanish traders. Their introduction coincided with changing culinary practices and the rising popularity of poultry as a festive delicacy. By the mid-16th century, Henry VIII is said to have been one of the first monarchs to eat turkey during Christmas. However, it wasn't until the 20th century that turkey overtook other meats, such as goose, as the dominant choice for Christmas dinner. The Victorian era played a significant role



in cementing many of the Christmas traditions still observed today. Queen Victoria and Prince Albert popularised the Christmas tree, gift-giving, and the idea of a large family meal. Although goose was still common, the growing availability of turkey made it an increasingly desirable option.

Charles Dickens; A Christmas Carol (1843) helped solidify the idea of turkey as a luxurious and generous Christmas centerpiece, with Scrooge purchasing a large turkey for the Cratchit family to replace their modest goose.

Practical Considerations

One of the reasons turkey gained popularity was its size. Turkeys are large enough to feed an entire family, making them an ideal choice for festive gatherings. Unlike smaller birds like chicken, a turkey can serve as the main course with plenty of leftovers for sandwiches or other dishes in the following days.

Turkeys became more accessible over time. In the 19th century, they were a luxury item, but advancements in farming and refrigeration in the 20th century made them more affordable and widely available. By the 1950s, turkey had firmly established itself as a Christmas staple in British households.

Cultural Significance

Turkey's association with Christmas is now deeply ingrained in British culture. It is a symbol of the festive season, representing abundance, generosity, and togetherness. The process of preparing and serving a turkey also carries ritualistic significance. For many families, cooking a turkey involves hours of preparation, often

bringing relatives together in the kitchen and around the dining table.

The versatility of turkey also plays a role in its enduring appeal. It can be stuffed with different fillings, roasted with various herbs and spices, and paired with a wide array of traditional sides like roast potatoes, Brussels sprouts, and cranberry sauce.



Alternatives and Modern Trends

While turkey remains the centerpiece for most, some people in the UK are choosing alternatives for their Christmas meal. Goose is making a comeback in some households, as are vegetarian and vegan options. However, turkey continues to dominate, thanks to its strong cultural association with Christmas.

Conclusion

The tradition of eating turkey for Christmas dinner in the UK is a blend of historical developments, practical advantages, and cultural significance. From its introduction to Britain in the 16th century to its widespread adoption during the Victorian era, turkey has become an enduring symbol of festive meals, it embodies the values of family, generosity, and tradition that make Christmas such a cherished day in the UK.

Merry Christmas everyone.

Shane Cooper, Stuarts of Drifffield, Lincoln Way, Beverley, HU17 8RH.

Memberships

EAST RIDING
LEISURE

MERRY Fitness

One months
Premier
membership
£27.50

6 months for
the price
of 5 from only
£67.50

15 months
for the price
of 12 from just
£162

All
memberships
include a FREE
weeks pass*

AVAILABLE FROM

18 November - 31 December 2024

INVEST IN YOUR
health and wellbeing
THIS CHRISTMAS

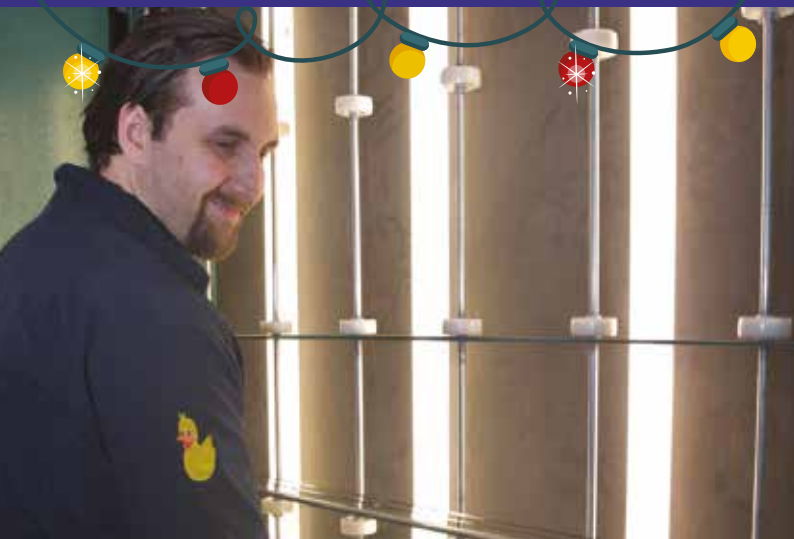
For more information visit eryc.link/MerryFitness

*Terms and conditions apply

EAST RIDING
OF YORKSHIRE COUNCIL

eastridingleisure.co.uk @ERLeisure /EastRidingLeisure
 EastRidingLeisure @ERLeisure er_leisure

W H Halmshaw Ltd



FOLLOW THE DUCK!
See me on the back of our vans

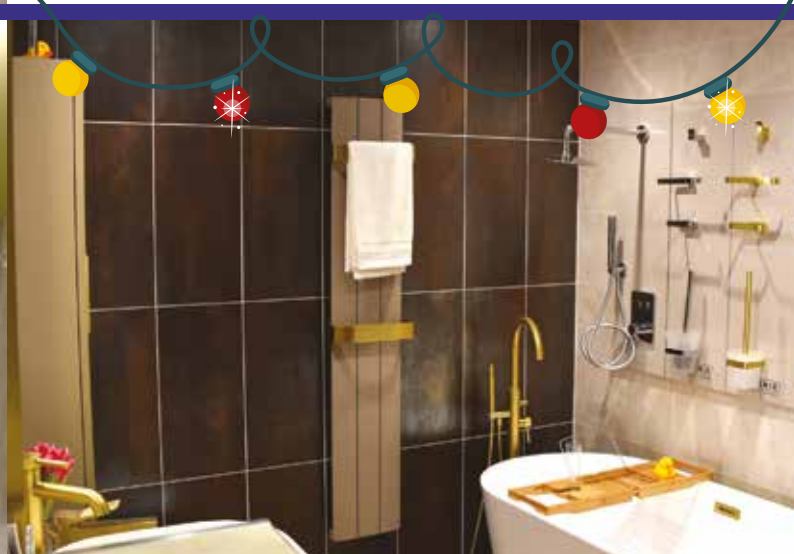
#followtheduck
tweet us a pic when you spot the duck to @whhalmshawltd



Our Hull and Beverley showrooms are open
Monday to Friday 9am-5pm & Saturday 9am-1pm.

Our Hull and Beverley trade counters continue to open
Monday to Friday 8am-5pm & Saturday 9am-1pm.

Your Local Bathroom Suppliers, Plumbing Merchants &
Glass Specialists with Showrooms in Hull & Beverley.



Merry Christmas and a Happy New Year to all our customers, old and new

W H Halmshaw Ltd, Inspirations Works, Annie Reed Road, Beverley, HU17 0LF.

T: 01482 867142 • www.halmshaws.co.uk

HULL AND EAST RIDING ADVANCED MOTORISTS - CHRISTMAS GET TOGETHERS

As a representative from your local road safety charity, Hull and East Riding Advanced Motorists, I have been asked to write a series of articles covering different aspects of Advanced Driving.

We are all volunteers and our group is currently celebrating our Diamond Jubilee Anniversary 1964-2024. 60 years of coaching Advanced Driving, contributing to making our local roads safer.

We run a range of courses and our contact details are at the bottom of this article. Please get in touch.

If you're planning to travel during Christmas, it's important to be aware of any traffic/road conditions that could impact on your journey.

Drivers are expected to make an estimated 16 million separate trips by car to see friends and family between Saturday 21st December and Christmas Eve.

If you're planning a long trip to see family or friends, here are some tips on how to make it safely to your destination.

CHECK THE TRAFFIC

Try and avoid setting off at peak times. With Christmas falling on a Wednesday this year, you might be able to travel on a different day. Plan your journey before you set off including checking for weather or traffic-related updates,

so you can allow more time to travel.

BASIC CAR MAINTENANCE

Do your pre-drive checks. Is your vehicle ready for a long journey? Whether it's a car or bike, ensuring your vehicle is in tip-top condition will help you enjoy your festive trip.

Make sure your service schedule is up to date. Prevention is always best when it comes to travelling.

DRIVER'S PREPARATION

Don't start a long trip feeling exhausted. Travel when you would normally be awake to minimise the risk of falling asleep. Factor in breaks every 2 hours. If possible, share the driving.

PACK MORE THAN PRESENTS

Make sure you take plenty of drinks and snacks, especially if you are travelling with children. A breakdown could mean a long wait with no heat, so it's sensible to have warm clothes, for all your passengers in potentially freezing temperatures. Don't forget Hi- Viz vests for everyone.

THE WEATHER

There's a high possibility that road conditions could be difficult over the Christmas period. Wintry weather is unpredictable; snow and ice make for slippery surfaces, and rain and darkening skies or even the low winter sun can cause issues with visibility.



Check the forecast before you travel, if severe wintry weather is predicted, you might have to change your plans, rather than taking a snow shovel.

KEEPING THE CHILDREN HAPPY

Ask them to choose things that they want for the journey to keep them entertained as well as some snacks. Always take some time to load and pack the car. Nicely wrapped presents could become dangerous projectiles and/or a temptation if left on view.

CONTACT DETAILS:

To find out more, call Hull and East Riding Advanced Motorists on **07752 694394** or visit iamroadsmart.com/groups/heram



Botterill & Co

Chartered Certified Accountants

We are a modern and professional accountancy practice ideally located to serve businesses in Beverley and the surrounding area.

We utilise modern accounting technology to provide you with a cost effective, professional service.

Our services:

- Annual Accounts
- Tax Planning
- Management Accounts
- Tax Returns
- Company Formations
- Payroll
- Cloud Accounting
- Bookkeeping & VAT

For a free initial consultation please contact us:

Office: 01482 862240

Email: gareth@botterillco.co.uk

Website: www.botterillco.co.uk

1st Floor Offices, 40 Norwood, Beverley, HU17 9EY.

Four Generations, Giving Over 130 Years Service

Herbert 1870-1962 Eardley 1908-1986 Geoffrey 1939-2015 David 1964



Golden Charter
Funeral Plans



- Funerals Respectfully Conducted
- 24 Hour Out of Hours Service
- Free Advice & Support
- Private Restrooms
- Prepaid Funeral Plans Available
- Finance Options Available



Tel: 01482 844695
www.hkempandsonltd.com

259 Hallgate, Cottingham, East Yorkshire, HU16 4BG

Fax: 01482 843898

Email: hkempandsonltd@gmail.com

Telephone: 01482 869111
sales@rosesofbeverley.karoo.co.uk



The Kitchen Factory, The Courtyard,
Tokenspire Business Park, Beverley
HU17 0TB

Monday to Friday 9am - 5pm | Saturday 9am - 1pm

Roses Kitchens grown in Beverley for over 20 years



I would love a



kitchen



Please call 01482 869111 to book a viewing

MANY MORE OF OUR CUSTOMERS KITCHENS ON OUR WEBSITE
5 STAR RATED OVER 69 GOOGLE REVIEWS ★★★★★

Visit www.roseskitchens.com
to see our customers kitchens and read what they have to say about us

Telephone: 01482 869111



FOX MOBILITY HELPING YOU DURING THE FESTIVE SEASON

At Fox Mobility Paul and Anne are keen to ensure all their customers old and new are prepared during the festive season.

Their mobility services and equipment play a vital role in helping people with limited mobility fully participate in the festive activities and celebrations.

Fox Mobilities services, include rental options for wheelchairs, scooters, and walkers, which make it easier for individuals to visit family, attend gatherings, and engage in seasonal festivities.

Preparing for the festive season also involves ensuring that homes are accessible and safe for visitors with mobility needs.

Equipment such as ramps, grab bars, and lift chairs can be installed to make a space more accommodating, allowing everyone to celebrate in comfort and safety.

Many people choose to go away for the holidays which can be quite daunting for those travelling.

Paul said, "Portable equipment options are especially helpful, and with the right

preparation and mobility equipment we can ensure a joyful, inclusive, and safe holiday season for everyone."

Fox Mobility, for all your mobility needs, advice and help.

110-112 Walkergate, Beverley, East Yorkshire, HU17 9BT.

Tel: 01482 887799.

Email: info@fox-mobility.co.uk

Website: www.fox-mobility.co.uk



Tel: 01482 887799
Email: info@fox-mobility.co.uk

Fox Mobility
110-112 Walkergate
Beverley
East Yorkshire
HU17 9BT

- **Stairlifts**
- **Riser Recliner Chairs**
- **Walking Aids**
- **Power Chairs**
- **Scooters and Accessories**
- **Servicing and Repairs for your Mobility Equipment**

Need advice about mobility equipment? We're here to help!



IAN HARRISON HANDYMAN - MAKING CHRISTMAS AND THE NEW YEAR SPECIAL

Ian Harrison, Handyman, has been providing his handyman services in and around Beverley for a number of years, and particularly during the Festive season, he understands how much his work has benefitted his customers.

Handymen provide invaluable services by handling a wide range of tasks around the home, from simple repairs to more complex installations.

Ian's versatility allows him to tackle jobs like repairing walls, assembling furniture, and mounting shelves, saving homeowners time and effort.



Skilled in various trades, Ian has the tools, expertise, and experience to complete these jobs efficiently and safely. For homeowners, having a reliable handyman can make a big difference in maintaining a well-functioning, comfortable home without the hassle of DIY.



They are often able to offer solutions for issues that could escalate if neglected, preserving the home's value and preventing costly repairs.

With flexible scheduling and a practical approach, Ian is the ideal handyman for keeping your home in excellent condition, making everyday life easier

and making it a special place for you, your family and friends.



Ian said, "At Christmas particularly, I enjoy completing the work, leaving their home ready to welcome family and friends for the festive season with those small jobs complete. Wishing everyone a Merry Christmas and a Happy, Healthy and Prosperous New Year".

You can contact ian on:
Mobile: 07970 332373,
Email: ianharrison68@icloud.com
Website: www.ian-harrison.com

A large, vibrant image of a Christmas tree made of glowing golden lights against a dark blue background with bokeh effects. The tree is the central focus of the advertisement.

Ian
HARRISON
HANDYMAN

For all your jobs around the home

07970 332373
ianharrison68@icloud.com
www.ian-harrison.com

BEVERLEY AC ANNOUNCES PITTAWAY BEVERLEY 10K AND VIKING PEST CONTROL WALKINGTON 10K RACES FOR 2025

Challenge yourself at the iconic Pittaway Beverley 10K which celebrates its 31st year in 2025.

This popular local race will take place on Sunday 11th May 2025 and entries will be open from 11am on Saturday 4th January 2025. Make a note of the opening time and date in your diary. The event is hugely popular and places get sold out quickly! The fully marshalled route with water stations takes place on closed roads in Beverley town centre and over the stunning Beverley Westwood. There is also the Westwood Mortgage Advisors Short Race for younger runners of all ages with finishers prizes and medals.

Entries open on Saturday 1st February 2025 at 11am for the fantastic Friday evening Viking Pest Control Walkington 10K, which will take place on Friday 11th July 2025. To avoid disappointment, get the date and time in your diary. This race takes place on closed roads around the beautiful village of Walkington in the scenic Yorkshire Wolds.



There is also the Westwood Mortgage Advisors Fun run for younger runners of all ages with finishers medal and chocolate. Beverley AC look forward to welcoming you to the start line for the 10K races, make a note in your calendar for 2025.

These events greatly support their nominated local charity for the year. 2024 was a very successful year supporting the Cherry Tree Community Centre and saw the Club raise approximately £5,000 which will go a long way towards their Youth Club build, which will be starting in the New Year. In 2025, they will continue to support the Cherry Tree Community Centre and also look to financially support Beverley Community Lift as well.

Have a Merry Christmas and challenge yourself in 2025.



BWP, A FAMILY AFFAIR

At Beverley Westwood parkrun we always talk about our parkrun family, people we have met along the way that we have formed bonds with, but they are not the only family at parkrun, our actual families are there too.

Beverley Westwood parkrun really is a family affair, we have many families that take part every week whether that is running, walking or volunteering. Your family really does become our family.



The family theme continues when folks are visiting BWP too, they are often visiting their family in the area, for instance Event Director Kay recently hosted her brother Ian and his partner Carol. Ian ran the course and Carol volunteered.

When I say families, I don't just mean parents and kids, we have lots and lots of couples that come along too, and of all ages! If you would like to join us but don't fancy coming on your

own, bring the family, the kids, your other half, your sister / brother, your cousin or even your granny, everyone is welcome to join the Beverley Westwood parkrun family, oh, and don't forget the dog!



The festive season is a time of goodwill and a time for families, so why not make your Saturday morning a time for the family to get together, walk, run or volunteer? You will be made most welcome and make a difference to people's lives.

Have a Merry Christmas and why not join us through 2025.





THE
BEVERLEY ARMS

THE SECRET'S OUT...

Dine with us before the 1st January and receive your mystery envelope for your chance to get 25%, 50%, or even 100% off your bill in the new year!*

Call or visit online to book your table.

LOVELY TO SEE YOU AGAIN!

As a thank you for dining with us today...

ENJOY 25% OFF
YOUR BILL

*Terms and conditions apply.
See reverse.

* For full terms and conditions
please scan the QR code

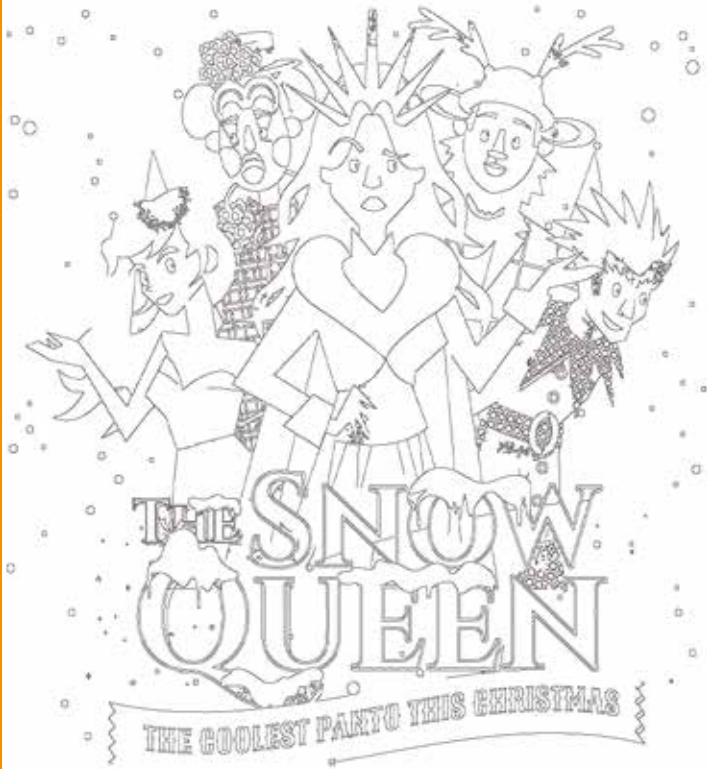


Bring your envelope back SEALED between 2 January and 11 February 2025
and spend £20 or more on food or drink to receive your discount*

*For full terms and conditions visit www.thwaites.co.uk/termsandconditions/

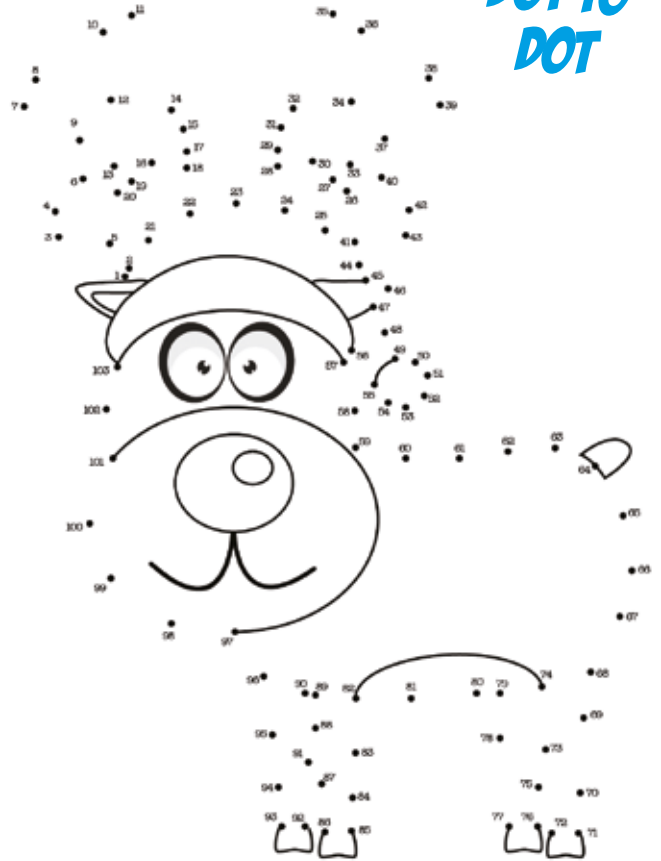
01482 296999 relax@beverleyarms.co.uk www.beverleyarms.co.uk
The Beverley Arms, 25 North Bar Within, Beverley HU17 8DD

COLOUR ME IN!



The Snow Queen is heading to Beverley Parkway this festive season. Help colour in the Queen, her sister the Summer Fairy, Jack Frost and the hilarious pantomime dame, Nancy Neapolitan and her silly Reindeer friend.

DOT TO DOT



What do you think the picture will be? Connect the numbers to discover who might be pulling Santa's sleigh this Christmas! Then once you've joined the dots, you can colour the red nose in!

Can you guide Rudolph through the maze to find the carrot?



CHRISTMAS MAZE

QUOTE FOR THE MONTH

"Remember the power of words and their impact"



FESTIVE COMEDY CORNER

Things that make you laugh!



What do you call Santa when he stops moving?
Santa Pause.



What did the wise men say after they offered up their gifts of gold and frankincense?
Wait, there's myrrh.

What did Santa say when he stepped into a big puddle?
It must have reindeer.

Why did the scarecrow get a big Christmas bonus?
Because he was outstanding in his field.

Do you have any amusing stories, quotes or pictures? Send them to info@justbeverley.co.uk

WORDSEARCH

R M I S A M T S I R H C V P D
 V E H Q P L W I C B P I A P E
 R K T V E O G K E W G N L X C
 W E G H N L A J Q R T U U O
 D V B S G L T R F O T M T U R
 O Z X M N U N D U W Y L T U A
 L G O F E X A R N Z G F Q J T
 U O W K T C S L D S T T B C I
 J C W E Y F E S N O W M A N O
 T H D H R E T D O Y S Y K Z N
 G Z N E R T A E H T Z Z S B S
 P I A R C O X S M R J X B J S
 C K F Y Q M M M T R M Q A C X
 W L Y T J K M O S A B V Z N T
 L F E R S S Q S P C V I B H B

CHRISTMAS
 DECEMBER
 DECORATIONS
 GIFTS
 LAUGHTER

PANTO
 SANTA
 SNOW
 SNOWMAN
 THEATRE



On Reflection where will you find the Ducks? Answer on Page 38.



FESTIVE COMEDY CORNER

Things that make you laugh!

What do you call an old snowman?
Water!

What is green, covered in Christmas lights and Christmas bulbs, and goes ribbit?
A mistle-toad.

What is every parent's favourite Christmas song?
Silent Night!

What do Santa's elves learn in school?
The elf-abet.

What did Adam say on the day before Christmas?
"It's Christmas, Eve!"



WHERE IN BEVERLEY?

Where in Beverley would you find this landmark? Answer on Page 38.



WHAT IS IT?

Can you work out what this festive image is? Answer on Page 38.



DREAM DOORS®

NEW LIFE FOR OLD KITCHENS

QUALITY KITCHEN MAKEOVERS

Treat yourself to a high-quality kitchen makeover for up to 50% less than a new fully fitted kitchen.

MODERN

CLASSIC

TRADITIONAL

CONTEMPORARY

- > Up to 50% less than a new fully fitted kitchen
- > Replacement kitchen doors
- > Cost effective made to measure solution
- > Worktops and appliances
- > Quick installation in 2-3 days by local professionals



Where reputation matters

9.8/10

4a Belprin Park,
 Swinemoor Lane,
 Beverley, HU17 0LN

Call us now for a free estimate:
01482 861 653





BEFORE



AFTER



FAMILY RUN BUSINESS

dreamdoors.co.uk



THE UK'S #1 KITCHEN MAKEOVER COMPANY

IN THE PICTURE WITH JOSH

As we head into the festive season, there are lots of photography opportunities, whether you want to get out into nature or capture the urban scenes, there are plenty of Christmas lights around to brighten up those dark Winter nights, and with any luck there will be the chance to see the Northern Lights again as well, either way it's a chance to get out and get creative with long exposure shots.

If we are fortunate enough to get a good covering of snow this always provides some great photo scenes, and if it's a bright sunny day it can look incredible, but even if it's dull, misty and overcast you can still capture some very atmospheric black and white photos that are equally as impressive. One thing I love doing this time of year is getting



out to the Yorkshire Coast or the North York Moors if the weather isn't too bad. Even on Christmas Day I need to spend a good part of the day out wandering in nature, whether that's a local walk on the Westwood or the Wolds, or if I can make it out Whitby or Robin Hoods Bay for a Christmas Day or New Years Day walk, you can't beat the morning light along the coast! It's always good to get there quite early, not just for the sunrise but also so you have a chance of getting parked! Whatever you're doing for the festive season, I hope you have a great time!



You can find more information about my work and full portfolios on my website and my social media pages and if you have any questions don't hesitate to get in touch.

Instagram: [@joshharrison.photography](https://www.instagram.com/joshharrison.photography)
Facebook: [@JoshHarrisonPhotography](https://www.facebook.com/JoshHarrisonPhotography)
Web: www.joshharrisonphotography.com
Email: info@joshharrisonmedia.com

THE BEST GIFTS COME IN SMALL PACKAGES!!

Sometimes the loveliest of gifts arrives in the smallest of parcels. So we could be thinking of jewellery - which to be fair is a rather fabulous idea in itself and is something special to keep and to pass on through the generations and if my husband is reading this please know that this is most definitely going to be a winner.

However my other thought for making a magical Christmas is to give a gift that stays with you in your memories - it is the gift of travel. The joy of opening a gift that creates excitement and anticipation as you await the actual experience - it is the gift of travel. Experiences tailored to suit your loved one - and can be a double win as often the giver of the gift might just be included in the experience too!

In a world that I find has become very busy and fast paced and hectic I find that having a break - even a short one - to switch off is one of the most wonderful experiences but also actually can be quite essential to our mental and physical health. As much as a large percentage of my business is made up of "main holidays" across the globe - often with various elements tailor made to build an itinerary covering various places and modes of transport

I do also offer short breaks both in this country and abroad. Ideas would include a treehouse, a yurt, a boating holiday, a cottage giving you a



chance to wind down and reconnect with nature. Our phones now act as a camera and enable us to take wonderful photos of the wonderful places we see and the delicious meals we eat. However with the phone comes the connection to the busy lives we lead with emails and messages bouncing in and distracting us. Although it seems quite hard to do, it really would be rather different and unique to leave the phone at home and just be present in the moment and enjoy.

Perhaps to some readers quiet would not appeal and the buzz and lights and noise of a vibrant city is just right up their street - which is also an option combined with various experiences from theatre shows, concerts, gin tasting etc...



A short break abroad can easily be arranged too with various cities easily accessible from a variety of airports to connect you to places such as Rome, Venice, Paris, Lisbon, Valletta, Palma, Valencia, Malaga, Seville, Budapest, Prague, Reykjavik. Combine the Christmas gift with an anniversary or birthday so that although you give the present on Christmas Day you find that you will be away on a particularly special day and have that anticipation and excitement to look forward to in 2025.

Perhaps if you have little ones that would love to meet Father Christmas then planning ahead for December 2025 would be a really good idea as it is a fairly short season and an extremely popular experience. Lapland can be for adults too and if you fancy searching for the Northern Lights, ice

fishing, snowmobiling and enjoying the arctic wilderness it really is an incredibly beautiful landscape.

Everyone has different ideas of what their perfect Christmas gift would be and if that idea was a short break for 2025 in this country or abroad - quiet and connecting with nature or vibrant and busy instead - the opportunity to distract and change your routine and give yourself opportunity to stop and pause and reflect and recharge has to be a huge benefit to body and mind.

A wonderful opportunity to go back to your "happy place" that works for you or a chance to put a new pin on the map and find a new place for you to explore.

Amanda McConnell, Travel Counsellors.
Tel: 01482 770540
Email: amanda.mcconnell@travelcounsellors.com
Web: www.travelcounsellors.com/amanda.mcconnell



WILSON WHEELS FOR THAT UNIQUE GIFT THIS CHRISTMAS

Cycling gifts that prioritise warmth and visibility are ideal for riders braving Winter's colder, darker days. Key items include thermal jackets, insulated gloves, and warm base layers that trap body heat while wicking away moisture, ensuring cyclists stay comfortable during chilly rides.



Windproof and waterproof outerwear is also essential, protecting against rain, wind, and icy gusts that can make Winter cycling challenging. For visibility, reflective gear and high-visibility accessories are crucial. Bright-coloured jackets, reflective vests, and LED lights for handlebars or helmets make cyclists more noticeable to motorists, enhancing safety on the road.

Accessories like rechargeable front and rear lights or reflective ankle bands also increase visibility without adding bulk.



Winter-specific cycling socks, handlebar mitts, and thermal caps that fit under helmets make thoughtful, practical gifts, keeping cyclists warm and safe while they enjoy their rides even in cold, low-light conditions.

For all your Christmas Gifts, Wilson Wheels.

Pop in store to see the new 2025 bike range

WILSONS WHEELS

T: 01482 882881
 W: www.wilsonswheels.co.uk E: info@wilsonswheels.co.uk

CHRISTMAS CLUB NOW AVAILABLE

- Adult Bikes
- Children's Bikes
- Electric Bikes
- Clothing for all cycling weather
- Parts and accessories

89a Grovehill Road, Beverley, East Yorkshire HU17 0EJ
 NOW OPEN: Monday - Saturday 9am - 5pm
 Sunday: CLOSED - Out riding our bikes

Tc Patisserie

We are now no longer a café, but still make our own patisseries and Tc Patisserie is now a French food shop to compliment our own products.

We have a daily selection of freshly made croissants, breads and patisseries.

We make reheat at home meals which can be bought over the counter or pre ordered, via our mailing list or messenger.

We can cater for any occasion, buffets, dessert tables or full 3 course meals can be arranged.

We are open Tuesday-Saturday 9am - 4pm.

10 Lairgate, Beverley, HU17 8EE
 Tel: 01482 860884

COME ALONG TO OUR
Christmas Fair

THURSDAY 5TH DECEMBER
 4 - 8PM

SPORTSABILITY FITNESS & WELLBEING STUDIO,
 SEQUOIA, INGS LANE, DUNSWELL,
 HU6 0AL

Local Stallholders
 crafts | cakes & bakes | gifts | bath & body
 homescents | activewear + many more

FREE ENTRY
 (cash only purchases)

WHAT'S ON IN BEVERLEY

Tell us about your event!

E-mail info@justbeverley.co.uk

Telephone **01482 679947**

For more events visit
justbeverley.co.uk/pages/news

4th November to 31st December

Reindeer Rampage

Help round up the herd for Father Christmas. Reindeer Rampage Christmas Trail around Beverley town centre. Pick up a free trail map and reindeer mask from the Tourist Information Centre on Cross Street for a chance to win a fantastic prize. information visit www.beverleyfestivalofchristmas.co.uk/beverley-reindeer-rampage

Saturdays in December

Festive Saturday Markets

Beverley's weekly Saturday Market will continue throughout December, with a special festive edition on Saturday 7th December prior to the Beverley Festival of Christmas.

Tuesday 3rd December

20th Anniversary Macmillan Christmas Carol Concert

Beverley Minster, 7pm. Attendees will be supporting local people affected by cancer. Enjoy an exclusive glimpse of the Christmas Tree Festival before it officially opens. Tickets are £15.

Tuesday 3rd & Tuesday 17th December

Singalong Memories

Walkington Methodist Church schoolroom on alternate Tuesday afternoons 2pm to 3.45pm. We sing along to original recordings from the 1950s, 60s and 70s. Large, easy to read words are displayed onscreen. You don't need a great singing voice - just enthusiasm. Refreshments are included in the charge of £3 per session. Contact Val on 01482 865249 or Sue on 01482 882188.

Wednesday 4th December

Mezzo Soprano Victoria Wright

St Mary's Church, North Bar Within. Lunchtime Concerts, 12-1pm.

Wednesday 4th - Sunday 8th December

Beverley Minster Christmas Tree Festival

A twinkling collection of more than 150 Christmas trees will be on display in Beverley Minster with entry costs £5 for adults and free entry for accompanied children (under 18). Visit beverleyminster.org.uk for more information including late night opening times.

Saturday 7th December

The Snowman

Join us for The Snowman, featuring a live orchestral soundtrack by East Riding Concert Orchestra at Beverley Parkway Cinema. This heartwarming classic lasts just around 30 minutes - perfect for children to be captivated from start to finish with every note and snowy scene. 4 performances throughout the day. Tickets are available now from beverley.parkwaycinemas.co.uk - reserve your seats for a magical family experience!

Sunday 8th December

Beverley Festival of Christmas

Beverley Festival of Christmas, supported by The Beverley Arms, will return for its 28th year,

transforming the historic town into a Christmas shoppers' wonderland with more than 120 stalls.

Tuesday 10th December

Beverley Anglo-French Society

The Beverley Anglo-French Society gives you the opportunity to learn more about France, its language and culture. Next meeting: 10 décembre 2024. Dégustation de vins. Phil Hargreaves. L'auteur de "Les Vins de Bergerac" nous rejoint pour nous faire découvrir une collection de différents vins français. The author of "The Wines of Bergerac" joins us to walk us through a collection of different French wines. Venue: The C Club, Wylies Rd, Beverley. 7.30pm. Non members £3. For more information and contact details please visit: www.beverleyanglofrenchsociety.org.uk

Sunday 15th December

Fergies Christmas Food and Craft Fair

The Ferguson Fawsitt, Walkington.

Beverley Male Voice Choir presents Prelude to Christmas with Guest Choir - Pastiche

Toll Gavel Church Beverley - Tickets £10. Available from Tourist Information Centre, Beverley Music Emporium www.ticketsource.co.uk/beverley-male-voice-choir or on the door.

Sunday 22nd December

Stand Up at the Fergie

The Ferguson Fawsitt, Walkington. Steve Rimmer will be introducing stand up performances from 4 UK circuit comedian's. Tickets £10 available from the venue.

Tuesday 31st December

Holly Tandy - New Years Party

This New Years Eve, The Ferguson Fawsitt, Walkington, will be hosting a party with special guest - X-Factor's Holly Tandy. Tickets are £20 each and are available to purchase at the bar. There will be a disco and food included.

East Riding Concert Orchestra
Presents a 'live' performance
of 'The Snowman'

Saturday 7th December
at
12.00pm
2.00pm
4.00pm
6.00pm

Beverley Parkway Cinema
Get your tickets at
<https://beverley.parkwaycinemas.co.uk>

WHAT IS IT ANSWER

It was Santa's beard!



WHERE IN BEVERLEY ANSWER

The post box next to the Rose & Crown pub



FIND THE DUCKS ANSWER

You should have found those ducks on the Halmshaw advert on Page 27.

BEVERLEY FILM SOCIETY
THE BEST OF WORLD CINEMA

Vincent, Parkway Cinema, Farnborough, Beverley
Screenings at 7.30pm on the second Thursday of the month
Annual Season Membership Fee: £15 or from February Half-season Fee: £7.50
Ticket prices: £3 per film for members, £6.50 for guests

Film Programme 2024 - 2025

12 SEPTEMBER 2024 The Innocent (2022) France Comedy Crime Drama Cert. 15 99 mins	11 FEBRUARY 2025 No Bears (2022) Iran Drama Cert. 12 136 mins
10 OCTOBER 2024 The Teachers' Lounge (2023) Germany Drama Cert. 12A 98 mins	15 MARCH 2025 Perfect Days (2023) Japan Drama Cert. PG 124 mins
14 NOVEMBER 2024 Joyland (2022) Pakistan Drama Cert. 15 126 mins	16 APRIL 2025 The Promised Land (2023) Denmark Drama Cert. 15 122 mins
12 DECEMBER 2024 The Eight Mountains (2022) Italy Drama Cert. 12 147 mins	8 MAY 2025 Fallen Leaves (2023) Finland Drama Romance Cert. 12A 81 mins
8 JANUARY 2025 Name Me Lawand (2023) UK Documentary Cert. PG 90 mins	12 JUNE 2025 Broker (2022) South Korea Comedy Crime Drama Cert. 12A 139 mins

We will also be screening three additional films, which will be free to members on:
31 OCTOBER 2024 - Monster (2023) Japan | Drama Thriller | Cert. 12A | 127 mins
30 JANUARY 2025 - Past Lives (2023) US/UK | Romance | Cert. 12A | 105 mins
19 JULY 2025 - Aicarras (2022) Spain | Drama | Cert. 15 | 120 mins

info@beverleyfilmsociety.org.uk | www.beverleyfilmsociety.org.uk

CHARM, CHEER AND OF COURSE, PLENTY OF CAROLS!

A Christmas Carol - 10th Anniversary Special - if you only want to watch one Christmas show that brightens up your festivities, this is the one!

Scrooge is now ready to take you on his remarkable journey, allowing you to witness how he transforms from a grumpy old sinner into a vulnerable, warm-hearted human being, reaching out to and helping others. A committed advocate of hope, love and generosity.

"I am as light as a feather, I am as happy as an angel, I am as merry as a schoolboy. I am as giddy as a drunken man."

Be the invisible guest at the household of the Cratchit family as they prepare for Christmas Day, or celebrate life at Fezziwig's joyous party and finally, join in Scrooge's awakening on Christmas morning. But remember! There is no escape from the ghosts of your very own: Ghost of Christmas Past, Ghost of Christmas Present and Ghost of Christmas Future!

Rehearsals - The Stubborn Old Scratch

Cheerful laughter and commitment to the story - enjoying the rehearsal and forming characters! Our cast and crew delved into their roles by immersing themselves in Dickens' rich characters, finding both their emotional depth and the humour that makes A Christmas Carol so timeless.

East Riding Theatre: Celebrating a Decade of Storytelling and Community

In 2013, a group of passionate volunteers, well-known professional actors and local businesses came together to transform a forgotten historic chapel into a vibrant independent theatre. With hard work, donated goods and sheer determination, the derelict building was brought back to life.

Just a year later, in December 2014, East Riding Theatre proudly opened its doors with A Christmas Carol, setting the stage for a decade of storytelling, creativity, and community spirit. Enjoy this captivating production of Charles Dickens' timeless tale of hope and redemption this Christmas at ERT this year!



"BAH HUMBUG?"

Our Volunteers Are the Heartbeat

From our very first production of Dickens' timeless classic to today, East Riding Theatre has grown into a beacon of creativity, supported by the passion and generosity of our hardworking volunteers and community fulfilling roles like front of house, box office attendants, café and bar staff etc...

With esteemed patrons like Dame Judi Dench and Sir Mark Rylance and an unwavering commitment to excellence, we look forward to many more years of making magic on stage. ERT still relies on its volunteers. Together, we can ensure East Riding Theatre continues to inspire for decades to come.

BE PART OF THE ERT STORY!

The transformation was made possible thanks to volunteers, affectionately called the "ExtravERTs,"

BOOK NOW!
www.eastridingtheatre.co.uk/a-christmas-carol-10th-anniversary-special/



who played a vital role alongside local businesses that donated goods and services.

Coordinated by individuals like Chris Harrod and supported by a volunteer-led board of theatre professionals and business experts, this collective effort breathed new life into the building and gave it a renewed purpose as a hub for culture and connection.

Christmas is a time to foster genuine care, compassion, and meaningful connection with others. Our volunteers practice generosity every day, making a real difference.

Join us or donate if you have some time to spare.

Thursday 5th - Saturday 28th December 2024
Reduced Capacity Performance - Wednesday 18th December

School Performances - Thursday 12th & Thursday 19th December

Café Bar Open 6.45pm | Doors Open 7.10pm
Show Starts 7.30pm + Selected Matinees
Price: £30-£15 (Group Booking Discounts Available)

Let's raise the curtain on another decade of storytelling, together.

FUN FACT! Did you know that Malcolm Tomlinson first took on the role of Scrooge when the theatre opened?



Written by: Charles Dickens
Adapted by: Vincent Regan
Directed by: John McAndrew
Photo credit: Sara Kruger Photography

Proudly sponsored by



A CHRISTMAS CAROL

A GHOST STORY

MEET THE CAST



Malcolm Tomlinson
Ebenezer Scrooge & The Company



Peter McMillan
Bob Cratchit, Fezziwig & The Company



Alison Shaw
Mrs Cratchit, Young Mother, Spirit of Christmas Past, Caroline & The Company



Peter McGovern
Fred Scrooge, Young/Timesup Scrooge & The Company



Katie Casson
Martha Cratchit, Fan, Mrs Dilber, Fred's Sister's Wife, The Lady & The Company



Roseanne Morgan
Belle, Fred's Wife, Spirit of Christmas Future & The Company



Paul Bedford
Belle's Husband & The Company



Richard Claxton
Readmaster, Fred's Friend, Caroline's Husband & The Company



Samuel Edward-Cook
Jacob Marley, Dick Wilkins, Spirit of Christmas Present, Joe & The Company



Daisy Mary Morgan
Tiny Tim & Oldest Cratchit Puppeteer Actor



Aidan Thompson-Charles
Cratchit Children Cratchit Actor

Thursday 5th - Saturday 28th December 2024

Box Office 01482 874050 | www.eastridingtheatre.co.uk

FLEMINGATE
BEVERLEY

Festive WEEKEND

10^{AM}
TIL 4^{PM}

7TH & 8TH
SAT SUN
DECEMBER

JOIN US FOR A FUN CHRISTMAS EXPERIENCE TO REMEMBER

Family SILENT DISCO

£4 PER PERSON | 45 MINS



SCAN THE QR CODE TO BOOK YOUR TICKETS
POP ON A PAIR OF HEADPHONES AND
DANCE TO TOP TUNES IN A UNIQUE, FUN WAY
THAT THE WHOLE FAMILY WILL ENJOY!

Under-14's must be accompanied by an adult.

Children's Rides

Festive Food & Drink

Christmas Shopping

Festive Petting Goats

Christmas Nordic Tipi

Entertainment & Music

PLUS MUCH MORE TO ENJOY AT
FLEMINGATE'S FESTIVE WEEKEND
AND



FLEMINGATE.CO.UK/SILENT-DISCO